



**SOUTHERN MARYLAND
SAILING ASSOCIATION**

RACE CIRCULAR



**2
0
0
9**

SOUTHERN MARYLAND SAILING ASSOCIATION

2009 RACE PROGRAM

CONTENTS

RACE SCHEDULE	1
RACE PROGRAM CONTACTS	3
CHANGES TO THE RACE CIRCULAR.....	4
RACE COMMITTEE ASSIGNMENTS.....	5
SMALL BOAT RACE PROGRAM	8
GENERAL SAILING INSTRUCTIONS.....	9
SOLOMONS AREA RACE MARKS (NM)	11
PATUXENT RIVER RACE MARKS (NM)	11
OLYMPIC TYPE COURSES.....	18
ZAHNISER'S WEDNESDAY NIGHT RACES	19
SMALL BOAT THURSDAY NIGHT RACES.....	20
31 st ANNUAL SHARPS ISLAND RACE	21
23 rd ANNUAL SPRING INVITATIONAL RACE	22
DOUBLE-HANDED RACE.....	23
5 th ANNUAL FROST-GOODE RACE	24
WOMEN'S SPRING SERIES.....	25
32 st ANNUAL LITTLE CHOPTANK RACE	27
VICE COMMODORE'S CUP	28
SMALL BOAT SUMMER ONE DAY REGATTA.....	29
37 th ANNUAL SUMMER INVITATIONAL RACE	30
STARS AND STRIPES RACE	31
17 th ANNUAL SCREWPILE LIGHTHOUSE CHALLENGE	32
PATUXENT RIVER REGATTA.....	33
RACE TO HERRINGTON HARBOUR.....	34
HERRINGTON HARBOUR BLIND DINGHY RACE	35
MIXED COUPLES RACE	36
33 rd ANNUAL SMITH POINT RACE.....	37
13 th ANNUAL SMALL BOAT INVITATIONAL REGATTA.....	38
FALL RACE SERIES	39
WOMEN'S FALL RACE SERIES.....	40
33 rd ANNUAL HOOPER/POINT-NO-POINT RACE.....	42
38 th ANNUAL FALL INVITATIONAL RACE	43
FROSTBITE RACES	44
Season Race Entry Form (SMSA Members)	45
Season Race Entry Form (Non-Members).....	46
PROTEST FORM.....	48
RACE COMMITTEE INSTRUCTIONS.....	51
SOLOMONS AREA RACE MARKS	57
CHESAPEAKE BAY RACE MARKS	58

RACE SCHEDULE

DATE		RACE
March		
1	Sun	Spring Frostbite #1
8	Sun	Spring Frostbite #2
15	Sun	Spring Frostbite #3
22	Sun	Spring Frostbite #4
29	Sun	Spring Frostbite #5
April		
12	Sun	Easter
15	Wed	Zahniser's Wednesday Night Race #1
22	Wed	Zahniser's Wednesday Night Race #2
25**	Sat	Sharp's Island Race
29	Wed	Zahniser's Wednesday Night Race #3
May		
2**	Sat	Spring Invitational
6	Wed	Zahniser's Wednesday Night Race #4
7	Thurs	Thursday Night Small Boat Series #1
9	Sat	Double-handed Race
13	Wed	Zahniser's Wednesday Night Race #5
14	Thurs	Thursday Night Small Boat Series #2
16*	Sat	Frost-Goode Series Race
20 PRO	Wed	Zahniser's Wednesday Night Race #6
21	Thurs	Thursday Night Small Boat Series #3
25	Mon	Memorial Day Holiday
27	Wed	Zahniser's Wednesday Night Race #7
28	Thurs	Thursday Night Small Boat Series #4
30	Sat	Women's Spring Series Races
31	Sun	Women's Spring Series Races
June		
3 PRO	Wed	Zahniser's Wednesday Night Race #8
4	Thurs	Thursday Night Small Boat Series #5
10	Wed	Zahniser's Wednesday Night Race #9
11	Thurs	Thursday Night Small Boat Series #6
13**	Sat	Little Choptank Race
17 PRO	Wed	Zahniser's Wednesday Night Race #10
18	Thurs	Thursday Night Small Boat Series #7
19*	Fri	Vice-Commodore's Cup Race
20	Sat	Small Boat Races at SMC
24	Wed	Zahniser's Wednesday Night Race #11
25	Thurs	Thursday Night Small Boat Series #8
27	Sat	Small Boat One-Day Regatta
28**	Sun	Summer Invitational Race
July		
1 PRO	Wed	Zahniser's Wednesday Night Race #12
2	Thurs	Thursday Night Small Boat Series #9
4	Sat	July 4 th Holiday and Fireworks Party
5**	Sun	Stars and Stripes Race
8	Wed	Zahniser's Wednesday Night Race #13
9	Thurs	Thursday Night Small Boat Series #10
15 PRO	Wed	Zahniser's Wednesday Night Race #14

DATE		RACE
July		
16	Thurs	Thursday Night Small Boat Series #11
17	Fri	EYC Solomons Island Race
19	Sun	Screwpile Lighthouse Challenge Day 1
20	Mon	Screwpile Lighthouse Challenge Day 2
21	Tues	Screwpile Lighthouse Challenge Day 3
22	Wed	Zahniser's Wednes Night #15 Fun Race
23	Thurs	Thursday Night Small Boat Series #12
29 PRO	Wed	Zahniser's Wednesday Night Race #16
30	Thurs	Thursday Night Small Boat Series #13
31	Fri	St. Mary's Governor's Cup
August		
5	Wed	Zahniser's Wednesday Night Race #17
6	Thurs	Thursday Night Small Boat Series #14
8	Sat	Geezer Squeezer Regatta
9	Sun	Patuxent River Regatta
12 PRO	Wed	Zahniser's Wednesday Night Race #18
13	Thurs	Thursday Night Small Boat Series #15
15	Sat	Race To Herrington Harbour
16	Sun	Herrington Harbour Blind Dinghy Race
19	Wed	Zahniser's Wednesday Night Race #19
20	Thurs	Thursday Night Small Boat Series #16
22	Sat	Mixed Couples Race
26 PRO	Wed	Zahniser's Wednesday Night Race #20
27	Thurs	Thursday Night Small Boat Series #17
29**	Sat	Smith Point Race
September		
2	Wed	Zahniser's Wednesday Night Race #21
3	Thurs	Thursday Night Small Boat Series #18
9	Wed	Zahniser's Wednesday Night Race #22
10	Thurs	Thursday Night Small Boat Series #19
19	Sat	Small Boat Invitational Day 1
20	Sun	Small Boat Invitational Day 2
27*	Sun	Fall Race Series
October		
4	Sun	Women's Fall Series
17**	Sat	Hooper Island/Point No Point Race
24**	Sat	Fall Invitational Race
November		
1	Sun	Fall Frostbite Race #1
8	Sun	Fall Frostbite Race #2
15	Sun	Fall Frostbite Race #3
22	Sun	Fall Frostbite Race #4
29	Sun	Fall Frostbite Race #5

*Denotes qualifying race for SMSA High Point Trophy

**Denotes CBYRA sanctioned and SMSA High Point

PRO Denotes a PRO Series Race

RACE PROGRAM CONTACTS

<u>Position</u>	<u>Names</u>	<u>Phone/email</u>
Race Chairman	Joy Dorethy	301-373-4898 (H) 240-434-5250 (Cell) race@smsa.com
Training Chairman	Kristy Yurko	240-725-0475 (Cell) training@smsa.com
Small Boat Coordinator	Robert Herbig, Jr.	301-737-1153 (H) 240-298-1774 (Cell) smallboat@smsa.com
Screwpile Lighthouse Challenge Manager	L. G. Raley	301-373-5700 (H) 301-862-3100 (W) lgraley@wildewood.com
CBYRA Delegate	Sam Septembre	301-737-2845 samuel.septembre@navy.mil
PHRF Delegate	Jim Whited	(410) 586-0601, jimw625@comcast.net
PHRF Handicapper	Dan Trammel	dantramm@verizon.net
Protest Committee Chairman	Stovy Brown	410-586-1254 (H) 410-586-1321 (W) stovy@chesapeake.net
Race Committee Boat Captain	John McKinney	301-481-0802 (Cell)
Protest Committee Members	John Weir; Pete LaRoche; Dan Trammell; Dan Shannon; Clarke McKinney; Shawn Stanley;	
Race Chairman's Committee at Large	Jeff Moore, Larry Howard, Shawn Stanley, TV Vandenberg, John Dixon	
Racing Program Support	Quantum Solomons Island Zahniser's Yachting Center Wildewood Park Partnership Spectrum Sciences, Inc Wyle Telemetry and Data Systems	Race flag maintenance Committee boat maintenance Administrative Support Web Site Support Administrative Support

CHANGES TO THE RACE CIRCULAR

Big Boat Racing Program

1. The F Flag has been dropped from all starting sequences.
2. The Corinthian class has been added for the following races:
 - a. Frost-Goode
 - b. Race To Herrington Harbour
3. Bay Race Mark "D" disappeared late 2005. It will not be replaced. If the Race Committee selects a course requiring a mark in the vicinity of the old mark "D", use one of the large, inflatable drop marks.
4. There is a new mark near the Solomons Gazebo. It is located in about 36' of water.
5. The GENERAL SAILING INSTRUCTIONS have been revised, updated, and repetition of the Racing Rules of Sailing has been deleted.
 - a. Section 30, Propulsion, has been added to allow propulsion without penalty when racing in the Chesapeake Bay Channel and racing boats have their safety jeopardized by barges and pilot boats.
6. New/Modified Races
 - a. Frost-Goode
 - b. Race To Herrington Harbour
 - c. Patuxent River Regatta
7. Check Start Times for all races.

Frostbite Racing:

There are now 5 races for each series. There is still one throw out per series.

Wednesday Night River Racing:

1. Post-race results will continue at Zahniser's Pool Bar. Until the Pool Bar opens in May (date TBA), race results will be held at the SMSA Clubhouse.
2. There is a new mark near the Solomons Gazebo. This mark becomes the new "X" mark for Wednesday starts. Check the Solomons Area Race Marks for all of the new locations.
3. Any protests not arbitrated or heard after racing on the Wednesday in which they occurred will be heard on the following Wednesday after racing, before preliminary results. The protest hearing date will be announced at the preliminary results, posted on the web site, and posted at the SMSA clubhouse. A representative of the protesting and protested boat Must appear at the hearing.

Small Boat Racing Program

1. This race circular contains the general sailing instructions for the Thursday Night Races and the Notice of Race for the Small Boat One Day and Invitational Regatta. Please reference the Table of Contents for this information.

RACE COMMITTEE ASSIGNMENTS

Month	Day	Week Day	Event	Race Committee
March	1	Sunday	Spring Frostbite #1	Spinnster
March	8	Sunday	Spring Frostbite #2	Jolly Roger
March	15	Sunday	Spring Frostbite #3	Little Latitudes
March	22	Sunday	Spring Frostbite #4	Toby/Shermax
March	29	Sunday	Spring Frostbite #5	Toby/Shermax
April	12	Sunday	Easter Sunday	None
April	15	Wednesday	Wednesday #1	
April	22	Wednesday	Wednesday #2	
April	25	Saturday	Sharp's Island – CBYRA, High Point	
April	29	Wednesday	Wednesday #3	
May	2	Saturday	Spring Invitational - CBYRA, High Point	
May	6	Wednesday	Wednesday #4	Lickety Split
May	7	Thursday	Thursday #1	Jeff Moore
May	9	Saturday	Double-handed	
May	13	Wednesday	Wednesday #5	
May	14	Thursday	Thursday #2	Shawn Stanley
May	16	Saturday	Frost-Goode - High Point	
May	20	Wednesday	Wednesday #6 – PRO #1	
May	21	Thursday	Thursday #3	
May	25	Monday	Memorial Day Holiday	None
May	27	Wednesday	Wednesday #7	Elan
May	28	Thursday	Thursday #4	Smitty Smith
May	30	Saturday	Women's Spring Series Day 1	
May	31	Sunday	Women's Spring Series Day 2	
June	3	Wednesday	Wednesday #8 – PRO #2	
June	4	Thursday	Thursday #5	Joe S and Sandy L
June	10	Wednesday	Wednesday #9	Lickety Split
June	11	Thursday	Thursday #6	Tim Flaherty
June	13	Saturday	Little Choptank - CBYRA, High Point	
June	17	Wednesday	Wednesday #10 – PRO #3	
June	18	Thursday	Thursday #7	
June	19	Friday	Vice Commodore - High Point	
June	20	Saturday	Small Boat Fun Day at St. Mary's College	
June	24	Wednesday	Wednesday #11	Vigilant
June	25	Thursday	Thursday #8	
June	27	Saturday	Small Boat One Day Regatta	
June	28	Sunday	Summer Invitational - CBYRA, High Point	

July	1	Wednesday	Wednesday #12 – PRO #4	
July	2	Thursday	Thursday #9	
July	4	Saturday	July 4 th Holiday	None
July	5	Sunday	Stars & Stripes - CBYRA, High Point	Little Latitudes
July	8	Wednesday	Wednesday #13	Elan
July	9	Thursday	Thursday #10	Walters
July	15	Wednesday	Wednesday #14 – PRO #5	Status Quo
July	16	Thursday	Thursday #11	Brian O’Hara
July	19	Sunday	Screwpile Day 1 – CBYRA	Screwpile RC
July	20	Monday	Screwpile Day 2 – CBYRA	Screwpile RC
July	21	Tuesday	Screwpile Day 3 – CBYRA	Screwpile RC
July	22	Wednesday	Wednesday #15 - Fun Race	
July	23	Thursday	Thursday #12	Yurkos
July	29	Wednesday	Wednesday #16 – PRO #6	Toby/Shermax
July	30	Thursday	Thursday #13	
July	31	Friday	Governor’s Cup – CBYRA	St. Mary’s College
August	5	Wednesday	Wednesday #17	Status Quo
August	6	Thursday	Thursday #14	
August	8	Saturday	Geezer Squeezer	American Flyer
August	9	Sunday	Patuxent River Regatta	
August	12	Wednesday	Wednesday #18 – PRO #7	Foxtrot Corpen
August	13	Thursday	Thursday #15	
August	15	Saturday	Race to Herrington Harbour	Keith Jacobs
August	16	Sunday	Herrington Harbour Blind Dinghy Race	Herrington Harbour
August	19	Wednesday	Wednesday #19	Vigilant
August	20	Thursday	Thursday #16	Dan Schneider
August	22	Saturday	Mixed Couples	Spinnster/Phoenix
August	26	Wednesday	Wednesday #20 – PRO #8	Pursuit/Slot Machine
August	27	Thursday	Thursday #17	Dan Schneider
August	29	Saturday	Smith Point - CBYRA, High Point	Rum Ration
September	2	Wednesday	Wednesday #21	Akoni
September	3	Thursday	Thursday #18	
September	7	Monday	Labor Day Holiday	None
September	9	Wednesday	Wednesday #22	
September	10	Thursday	Thursday #19	
September	19	Saturday	Small Boat Invitational Day 1	
September	20	Sunday	Small Boat Invitational Day 2	
September	27	Sunday	Fall Series - CBYRA, High Point	
October	4	Sunday	Women’s Fall Series	Toby/Shermax
October	17	Saturday	Hooper Island/Pt. No Pt. - CBYRA, High Point	
October	24	Saturday	Fall Invitational - CBYRA, High Point	

November	1	Sunday	Fall Frostbite #1	
November	8	Sunday	Fall Frostbite #2	
November	15	Sunday	Fall Frostbite #3	
November	22	Sunday	Fall Frostbite #4	
November	29	Sunday	Fall Frostbite #5	Jolly Roger

SMALL BOAT RACE PROGRAM

EVENT

Kick-Off Meeting @ SMSA
Thursday Night Races

DATE

24 April, Friday - 1830 @ SMSA Clubhouse
May 7th - - September 10th

Thursday Season Fee: \$65

1-Day Regatta

11th Annual Small Boat Invitational Regatta

Saturday June 27th

September 19th and 20th

See the Table of Contents

See the Table of Contents

Any monohull (centerboard) or catamaran ranging from 8 to 21 feet in length qualifies to participate in the small boat race program.

Thursday night post-race gatherings will take place at the SMSA Clubhouse immediately following the conclusion of racing. The Small Boat Program will coordinate food. Competitors are asked to bring their own non-alcoholic beverages & provide a contribution to cover the cost of the food provided. The SMSA Clubhouse bar will be open.

Contact the Small Boat Program Coordinator, see Contacts page, for more information.

GENERAL SAILING INSTRUCTIONS

1. Notice

1.1 Each yacht owner agrees to abide by the regulations and sailing instructions of each event. In consideration of being permitted to enter the event, being knowledgeable of the risks of competitive sailing and knowing that it is his/her responsibility to decide whether to enter or continue any race, he/she voluntarily assumes the risk of participation in this event and releases SMSA and the people conducting the event from all liability in connection with any injury or damage that may occur.

2. Rules

2.1 SMSA events are governed by the current Racing Rules of Sailing (RRS), except as modified by CBYRA and the SMSA Sailing Instructions. It is the intent of SMSA to conform to the existing CBYRA rules in all cases, except where the SMSA Sailing Instructions specifically override the existing rules.

3. Entries

3.1 The SMSA racing program is open to all members and invited guests. Owners of yachts wishing to compete in the Bay-racing program must be members of CBYRA or of a yacht club recognized by, and acceptable to, SMSA. The race fee for one informal race will be waived for any boat owner that has not raced in any prior season or event.

3.2 SMSA members must submit an entry form with race fee prior to the first event in which they participate. The season entry form and race fee will cover all SMSA Big Boat events except for the Screwpile Lighthouse Challenge Regatta. A separate form and race fee is required for the SMSA Small Boat events.

3.3 Non-SMSA members must submit a completed SMSA Standard Entry Form and entry fee, payable by a check or money order to SMSA, for each event. Non-members may elect to pay one fee for the entire season. It is the responsibility of the owner to ensure their entry is in the hands of the race committee by the deadline indicated in the Special Sailing Instructions. A separate form and race fee is required for the SMSA Small Boat events.

3.4 All entry forms for CBYRA sanctioned PHRF class events hosted by SMSA must be accompanied by a copy of the boat's current Valid Rating Certificate as issued by PHRF of the Chesapeake.

4. Ratings

4.1 All yachts in Handicap Division classes must have a valid rating or measurement certificate on file with the appropriate CBYRA organization. If a yacht's rating is changed, it is the owner's responsibility to inform the race committee of the new rating at check-in time. A copy of the revised rating certificate should be given to the Race Chair. A rating change becomes effective on the date listed on the revised rating certificate. Race results will be amended upon receipt of a copy of the revised rating certificate, if necessary.

4.2 A provisional PHRF rating for participants racing in an informal race series may be given by the Race Chairman. The provisional rating will be based on the current ratings. Provisional ratings may be given for up to three (3) consecutive races to any yacht competing in an informal race. Yachts must have a valid PHRF certificate to be scored for overall series awards. Exception: Yachts without a PHRF certificate may compete in the Double-Handed and Mixed Couples Races and be scored for these event trophies. The intent of providing a provisional rating is to encourage participation in racing events and to give new racers ample time to receive their rating certificates.

5. Crew Limits

5.1 Crew limitations imposed by PHRF or a class association will be in effect for all formal races and CBYRA sanctioned events, hosted by SMSA. The PHRF or class association maximum crew limit for SMSA informal events is waived. The intent of this is to allow a skipper to bring visiting friends, new sailors, co-workers, etc., and not have to turn them away because of the crew limit.

6. Official Notice Board

6.1 Notices to competitors will be posted at the SMSA Clubhouse by 1700 the day preceding the event. The notice may also be published on the SMSA website at www.smsa.com.

7. Changes to Sailing Instructions

7.1 Changes in sailing instructions for an event will be handled as specified in the Special Sailing Instructions for the particular event. Changes in the General Sailing Instructions will be posted at the SMSA Clubhouse no later than 30 days prior to taking effect.

8. Signals Made Ashore

8.1 Signals made ashore will be displayed at the SMSA Clubhouse one hour before the rendezvous or first warning signal, unless modified in the Special Sailing Instructions for the event.

9. Class Definitions and Flags

9.1 Class definitions and flags are as specified by PHRF of the Chesapeake.

10. Sail Numbers

10.1 When a yacht competes in an SMSA event sanctioned by CBYRA, she shall carry either US SAILING numbers or the sail number listed in the class roster.

11. Courses

11.1 The course to be sailed will be designated in the Special Sailing Instructions, by Solomons Area Race Mark designators, or be an Olympic type course as designated below.

11.2 Inflatable drop marks may be used in conjunction with fixed government marks. The marks shall be rounded in the order displayed reading from left to right or from top to bottom. Marks designated by red letters shall be rounded to port, and those designated by green letters shall be rounded to starboard. One lap shall be sailed unless the course designation is followed by a numeral, which specifies the number of laps.

11.3 For Olympic type courses, all marks will be left to port. The course designator, range and bearing of the first leg will be displayed before the warning signal. See the diagram at the end of these General Instructions.

<u>Designator</u>	<u>Description (Olympic Type Courses using drop marks)</u>
W	Windward/Leeward (5 legs, windward finish)
L	Windward/Leeward (4 legs, leeward finish)
O	Olympic triangle (6 legs, windward finish)
G	Triangle (5 legs, leeward finish)

12. Marks

12.1 Drop marks will be assigned the letters "L", "W", or "X", when used in conjunction with Solomons Area Race Marks. Mark "L" is set directly to leeward of the starting line. Mark "W" is set directly to windward of the starting line. Mark "X" is the pin end of the start/finish line.

12.2 A table listing the official distances between the Solomons Area Race Marks is provided below. All Patuxent River navigation marks are to be passed on the channel side at all times unless it is a specified mark of the course.

12.3 Patuxent River Race Mark "Y" is to be passed on the channel side at all times and will be considered a "rounding mark" for all informal races that finish at "Z". Patuxent River Race Mark "Z" is the yellow flag on a Calvert Marina piling across the creek from "H" dock at Zahniser's Yachting Center, and may be used for Wednesday Night races or Frostbite races. Finishing at Zahniser's is strongly encouraged for evenings when the wind conditions support a downwind finish. A table listing the official distances between the Patuxent River Race Marks is provided below.

SOLOMONS AREA RACE MARKS (NM)

	A	B	C	E	G	H	I	J
A	---	0.94	3.41	2.15	3.72	5.41	5.95	6.47
B	0.94	---	2.47	1.28	2.82	4.47	5.01	5.53
C	3.41	2.47	--	2.57	3.11	2.14	3.79	3.23
E	2.15	1.28	2.57	---	1.57	4.14	4.00	5.09
G	3.72	2.82	3.11	1.57	---	3.85	2.70	4.57
H	5.41	4.47	2.14	4.14	3.85	---	2.84	1.10
I	5.95	5.01	3.79	4.00	2.70	2.84	---	2.87
J	6.47	5.53	3.23	5.09	4.57	1.10	2.87	---

Bearings

° magnetic		To							
		A	B	C	E	G	H	I	J
From	A	---	072°	---	055°	056°	---	---	---
	B	252°	---	122°	042°	050°	109°	075°	106°
	C	---	302°	---	331°	002°	094°	046°	094°
	E	235°	222°	151°	---	057°	126°	085°	119°
	G	236°	230°	182°	237°	---	148°	100°	137°
	H	---	289°	274°	306°	328°	---	013°	093°
	I	---	255°	226°	265°	280°	193°	---	170°
	J	---	286°	274°	299°	317°	273°	350°	---

PATUXENT RIVER RACE MARKS (NM)

	A	B	K	L	M	T	V	X	Y	Z
A	---	0.94	1.76	2.36	2.83	0.90	0.90	2.36	1.41	2.35
B	0.94	---	2.75	3.22	3.71	1.58	1.84	3.19	2.17	3.11
K	1.76	2.75	---	1.08	1.99	1.50	0.91	1.54	1.33	2.14
L	2.36	3.22	1.08	---	1.00	1.68	1.74	0.76	1.22	1.90
M	2.83	3.71	1.99	1.00	---	2.16	2.41	0.56	1.70	2.38
T	0.90	1.58	1.50	1.68	2.16	---	1.05	1.64	0.61	1.55
V	0.90	1.84	0.91	1.74	2.41	1.05	---	1.89	1.24	2.16
X	2.36	3.19	1.54	0.76	0.56	1.64	1.89	---	1.18	1.86
Y	1.41	2.17	1.33	1.22	1.70	0.61	1.24	1.18	---	0.94
Z	2.35	3.11	2.14	1.90	2.38	1.55	2.16	1.86	0.94	---

Bearings

° magnetic		To									
		A	B	K	L	M	T	V	X	Y	Z
From	A	---	072°	255°	281°	---	314°	243°	---	---	---
	B	252°	---	254°	273°	---	282°	247°	---	---	---
	K	075°	074°	---	325°	342°	045°	088°	353°	024°	---
	L	101°	093°	145°	---	359°	---	119°	033°	---	---
	M	---	---	162°	179°	---	---	---	130°	---	---
	T	134°	102°	225°	---	---	---	188°	---	---	---
	V	063°	067°	268°	299°	---	008°	---	---	343°	---
	X	---	---	173°	213°	310°	---	---	---	---	---

	Y	---	---	204°	---	---	---	163°	---	---	---
	Z	---	---	---	---	---	---	---	---	---	---

13. Start

13.1 Races will be started in accordance with Special Sailing Instructions for the particular event.

14. Recalls

14.1 Race Committee may hail by voice or VHF radio channel 72 the sail numbers of premature starters.

14.2 General Recalls will be signaled in accordance with the RRS 29.3 as modified below. If a General Recall is made, classes following the recalled class will start in their scheduled start sequence. Recalled classes will start in the order they were recalled after the starting signal of the last scheduled start.

15. Finish Line

15.1 The finish line will be between a yellow flag on the RC boat and a designated *adjacent mark*, or as designated in the Special Sailing Instructions. Note: the finish *mark* does not have a color. A yacht approaching the finish line at night must show a white light when 1/4 mile away to call attention to her presence and when crossing the finish line so as to illuminate her sail number.

16. Multiple Races

16.1 Depending on the Special Sailing Instructions for the particular event and the weather/wind conditions, the Race Committee may elect to run multiple races.

16.2 Subsequent races will be indicated by the Race Committee raising the "R" flag.

17. Finish Times

17.1 For all races, yachts are responsible for taking their own finishing time and identifying, if possible, the yachts finishing directly ahead and directly astern. GPS time should be used. If a race committee is not on station, each yacht must record its finishing time to the nearest second from the official watch. These two times will be reported to the SMSA Race Chairman by the time prescribed in the Special Sailing Instructions.

17.2 For point-to-point races (Middle Distance, Vice Commodore's Cup, etc.), each yacht will designate at least one watch as the yacht's official watch. Using this official watch, each yacht will record the time of day, to the nearest second, of its class start.

17.3 It is strongly recommended that all competitors use the time feature of a handheld GPS (or equivalent device) for this purpose; however, this is not a requirement. For point-to-point races, the Race Committee shall call out a GPS time hack during pre-race maneuvers to allow those boats without GPS time to synch up their watches.

18. Race Results

18.1 Race results are considered final once published in the SMSA web site. Exceptions are race results that contain pending protests, erroneous ratings, mathematical errors and/or other administrative mistakes. Erroneous results will be amended and republished as required.

19. Scoring

19.1 The scoring system used will depend on the type of series, and the time period over which the events occur, as specified in this section. To qualify for any SMSA series award, yachts must meet the requirements of section 4 of the General Sailing Instructions. PHRF ratings are expressed in seconds per mile to be deducted from elapsed time to produce corrected times. Corrected time for each boat is calculated by multiplying its elapsed time by its PHRF rating. Corrected times shall be rounded to the nearest second with 0.5 seconds rounded upwards

19.2 Per the RRS definition of a conducted race, all boats (minimum of one) that have competed in a class will be scored. Whether a boat receives an award will be determined by the individual race instructions.

19.3 For All Series...

19.3.1 A minimum of one race constitutes a series.

19.3.2 The number of entries shall be the number of competitors in that series.

19.4 The following Race Series will be scored using the Low Point System, RRS Appendix A as modified below:

Series	Throw outs
Women's Spring Race Series	1 if 4 or more races
Women's Fall Race Series	1 if 4 or more races
Fall Series	None
Frost-Goode Race	None
Patuxent River Regatta	1 if 4 or more races
Spring Frostbite Series	1 if 4 or more races
Fall Frostbite Series	1 if 4 or more races
Middle Distance Series	1 if 4 or more races
Invitational Series	None

19.5 The Middle Distance Series consists of the Sharps Island Race, Smith Point Race, Little Choptank Race, and Hooper Island/Point-No-Point Race. The Invitational Series consists of the Spring Invitational, Summer Invitational, and Fall Invitational races.

19.6 Each of the three Invitational Series races may, at the discretion of the Race Committee, consist of one or more races for that day (Spring, Summer, or Fall Invitational). If multiple races are run on a given day, low point scoring will be employed resulting in each yacht receiving a single score which will feed into the overall series low-point score for the Invitational Series.

19.7 Zahniser's Wednesday Night Series

19.7.1 The Zahniser's Wednesday Night Series is comprised of two series. The 12 races not designated as PRO will be run as "normal" Wednesday Night races and will be scored as a series. The other 8 races will be the "PRO Series". One race, #15, a fun race, may be scored, but will not be counted toward either series.

19.7.2 The scoring shall be the same for all classes. Nightly class awards are presented. Series scoring for each of the two series will be scored using the High Point System, RRS Appendix A. A boat will be allowed two throw-outs for the "PRO Series" and three throw-outs for the "normal" Wednesday Night series.

19.7.3 A boat/crew scheduled to serve RC duties is eligible to be scored and to receive an award that same date only if it can muster enough crew to properly perform RC duties that night. Failure to serve scheduled RC duties will result in a cancellation of one of the allowed race-scoring throw-outs.

19.7.4 For Wednesday Night Racing, participating boats will be divided into three divisions - White, Green and Non-Spinnaker. The Wednesday Night Race division splits will be based on PHRF ratings as follows:

- White Fleet 119 and below
- Green Fleet 120 and above
- Non-Spinnaker All

19.7.5 The special "PRO Series" Wednesday Night Races will be conducted using drop marks, windward-leeward courses, and a Mark Boat.

19.8 Frostbite Racing

19.8.1 The first race course mark for all Frostbite Races will be designated as "K". The start line will be established to be perpendicular to "K". This will entail moving the Race Committee farther down toward the South end of the road in order to set the line perpendicular to "K".

19.8.2 Race Committees are strongly encouraged to clear the area surrounding, and particularly behind, the start area such that signal flags can be clearly viewed by race crews. Communication by the Race Committee via the VHF radio is required.

19.8.3 Boats are allowed to apply to PHRF of the Chesapeake for a "Frostbite PHRF Rating." The rating change is effective immediately on the date of approval. This may not coincide with the dates of our frostbite racing, especially in the spring when the races are deferred to April. Such "frostbite ratings" will be effective and stay in effect during the periods of our racing regardless of the ratings dates applied by PHRF.

19.9 SMSA Season High Point Scoring

19.9.1 To qualify for an SMSA Season High Point score, a boat must compete in at least 50% of the qualifying events below that are actually conducted for the class. The scoring shall be the same for spinnaker and non-spinnaker classes. The scoring method shall be the same as the CBYRA high point method for PHRF high point; with the exception that bonus points allowed for each boat for long distance races shall be limited to 20 points for the season.

19.9.2 The qualifying races for SMSA Season High Point awards are:

Qualifying Events

Fall Series
Frost-Goode Race
Sharps Island Race *
Smith Point Race *
Little Choptank Race *
Hooper Island/Point-No-Point Race *
Spring Invitational Race *
Summer Invitational Race *
Fall Invitational Race *
Vice Commodore's Cup
Stars and Stripes

* Denotes CBYRA Sanctioned Event

20. Protests and Appeals

20.1 The Southern Maryland Sailing Association protest committee consists of a senior protest committee and subcommittees appointed for each race. A *party* to a hearing that believes that a subcommittee has made an error may, within 15 days of receiving written decision of the subcommittee, ask the protest committee to reopen the hearing. In this case, the senior protest committee will consider the request. This changes RRS 66.

20.2 Protests must be made in accordance with RRS 61.1(a). All protests must be submitted on a form following RRS 61.2, but preferably on the form provided (2 pages) in this circular. All Protests will be heard as specified in the Special Sailing Instructions.

20.3 For protests involving an alleged breach of RRS, Part 2, a short arbitration hearing will be held after the race, following proper filing of the protest and prior to any protest hearing. The arbitration hearing will be held if both parties to the protest are present and a member of the SMSA Protest Subcommittee authorized to hold such a hearing is present. After a written protest form is properly lodged, one representative from each boat will meet with the arbitrator unless the protester requests that the protest be withdrawn. No witnesses will be allowed. The acceptance of an arbitration penalty cannot be grounds for redress or be appealed. Protests not resolved by arbitration will be forwarded to the protest subcommittee. Protest hearing dates will be announced at the preliminary results of the event in which the protest was filed, posted at the SMSA clubhouse and on the website.

20.4 Appeals for SMSA races sanctioned by CBYRA will be handled by CBYRA in accordance with RRS 70, and modified as specified by the CBYRA Greenbook. Address appeals to:

CBYRA Appeals Committee
612 Third Street, Suite 401
Annapolis, Maryland 21403

21. Penalties

21.1 For SMSA races sanctioned by CBYRA, unless otherwise specified in the Special Sailing Instructions for that particular event, a boat infringing a rule of RRS, Part 2, may take a Scoring Penalty in accordance with the CBYRA Greenbook as amended below:

21.1.1 RRS 44.3(a) is deleted and replaced by: "A boat takes a Scoring Penalty by displaying a yellow flag or an "I" flag at the first reasonable opportunity after the incident, keeping it displayed until she has reported the flag to the Committee Boat immediately after finishing by hail acknowledged by the Committee. The boat shall then fully report the incident in writing to the Race Committee within the time limit for lodging protests."

21.1.2 RRS 44.3(b) is deleted and replaced by: "A boat that displays a penalty flag and complies with some but not all the requirements of paragraphs RRS 44.3 (a) (as replaced above), or a boat that acknowledges an infringement of a rule of RRS, Part 2 prior to hearing, shall be penalized places equal to 50% (rounding 0.5 upward) of the number of yachts entered, but not worse than the position of DNF or less than six (6) places. No hearing is required, but a boat may request a hearing on having met the requirements of paragraphs RRS 44.3(a) (as replaced above)."

21.1.3 RRS 44.3(c) is amended by adding: "The 20% penalty shall not be less than three places."

21.2 For informal races, Alternative Penalties, RRS 44.1, is modified to allow a boat to take a scoring penalty for a breach of a rule of RRS Part 2 after the incident but prior to the protest hearing by acknowledging the infringement either before an arbitration hearing, or by accepting the opinion of an arbitrator at an informal hearing. This scoring penalty shall be 40% of the number of boats entered (rounding 0.5 upward), but shall not be less than 4 places, added to her actual finish position. She shall not be scored worse than Did Not Finish, however.

22. Awards

22.1 Awards are made to the owner(s) and his/her boat when considered as a single entity. Each boat entered in a SMSA race must be entered in the name of the owner(s) to be eligible for awards, except for the Women's Spring and Fall Race Series.

22.2 Event awards are made in accordance with the event's Special Sailing Instructions.

22.3 Series and high point awards shall be provided for 1st place when at least three (3) boats qualify, for 1st and 2nd places when at least five (5) boats qualify, and for 1st, 2nd, and 3rd places when at least seven (7) boats qualify. Other awards may be designated within the Special Sailing Instructions for the event. Qualifying boats must meet minimum requirements for races sailed, in accordance with section 19 of these General Sailing Instructions, to receive series or high point scores.

23. Racing at Night

23.1 For determining the right of way between contestants, the RRS Part 2 shall govern except that between sunset and sunrise, the following shall be substituted for RRS 17: "When one of two boats is about to pass the other and they are on the same tack and within three overall lengths (of the longer boat) of each other, the boat being overtaken shall maintain her proper course, and the boat clear astern, if she elects to pass to windward, must do so at least three overall lengths (of the longer boat) from the leeward boat. Both boats shall sail their proper course when overlapped."

23.2 Boats in the vicinity of vessels with which they might collide shall illuminate their sails by all available means to ensure that they are clearly seen by other vessel(s). This is not in lieu of the display of required lights under the Unified Rules, but in addition to it. Such display shall not be grounds for protest.

24. Radios

24.1 Radios shall not be used to obtain navigation or weather information that is not available to the general public. It is suggested that boats racing monitor VHF Channel 16 and 72 and make contact with commercial traffic on Channel 13 as required for safety.

24.2 Any postponements and/or cancellations for weather conditions of Bay and River racing may be announced on VHF channel 72 by the Race Committee. The Race Committee will make every effort to announce individual recalls on channel 72.

25. Equipment

25.1 All equipment required by US Coast Guard, the RRS, Class Rules, these General Sailing Instructions, and the Special Sailing Instructions shall be aboard and readily available. The Class or SMSA has the right to inspect, without notice, any boat for the required equipment.

26. Commercial Traffic

26.1 Any attempt by a contestant to exercise right of way, to cross in proximity to, or to interfere with reasonable transit of the race area by commercial freighters, tugs and tows or other commercial vessels that are unable to readily respond, will be grounds for protest. Should such a protest occur, the burden of proof is on the boat allegedly interfering. Contestants must take evasive action well in advance of any potentially dangerous situation.

26.2 If a boat without way in a ship channel infringes RRS 42.1 by using an engine to clear the channel at the approach of commercial traffic, it shall either retire or, if the incident was unavoidable, continue racing and request redress. RRS 62 is modified to allow the consideration of this request.

27. Disposal of Refuse

27.1 All refuse must be disposed of in a proper manner upon returning ashore. Discharging refuse over the sides by contestants may be grounds for disqualification.

28. Bay and River Racing

28.1 SMSA Bay and River races are open to SMSA members and others filing valid entries with the race committee. A valid entry requires a signed SMSA and/or CBYRA entry form, with required fees, and valid class rating certificate, in accordance with paragraph 4 of these instructions be on file with the Race Committee. The SMSA Race Circular, with the General Sailing Instructions, as well as any Special Sailing Instructions pertaining to the race(s) entered, will be provided for each yacht filing a valid entry with SMSA.

29. Race Committee

29.1 SMSA Race Committees are made up of volunteers on a race-to-race basis. Race Committees are responsible for the conduct of the race, and computing race results. All information needed by the Race Committee will be supplied prior to the race. It is highly advisable for the Race Committee to use a laptop PC with scoring programs provided by our Official SMSA Scorer and found in the SMSA web site, Racing section. Any questions regarding race conduct should be directed to the Race Chairman for clarification. The Race Committee shall give the Race Chairman the completed score sheet as soon as possible after completion of the race, transmitting as an attachment to an e-mail is preferable (copy to SMSA Scorer) with back-up hard copy as soon as practical. For races in which the Scorer is present, transfer of results to the Scorer when preliminary results are announced is allowed. In these cases, the Scorer is responsible for informing the Race Chairman of the receipt of the results. SMSA's Scorer will post race results on the SMSA web site in a timely manner.

29.2 **ALL registered SMSA boat owners are required to serve as Race Committee for one or more SMSA sanctioned races. We cannot conduct a viable program without EVERYONE doing his or her part to make it successful.** Experienced skippers are encouraged to sign up for the Wednesday Night PRO Series Races or weekend races, leaving the informal races for less-experienced racers.

29.3 At least one member of the Race Committee must have attended the SMSA Race Management seminar, served as a key member of the Screwpile Lighthouse Challenge Race Committee, taken the US Sailing Club Race

Officer course, or volunteered and served as a Race Committee member of SMSA race events for at least five consecutive years.

29.4 Failure to serve as Race Committee will result in a loss of a throw out within all series in which the offending boat has participated.

30. Propulsion

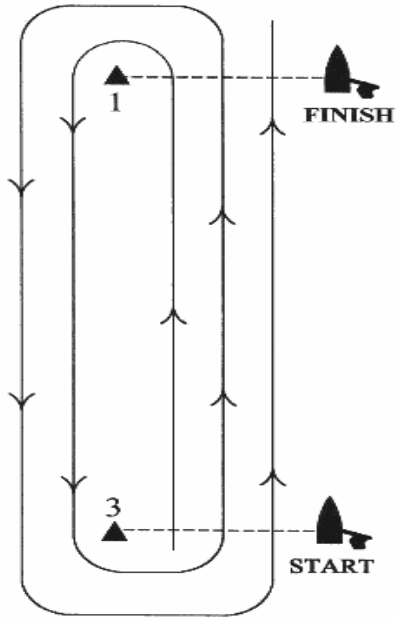
30.1 As allowed by RRS 42.3(h), during races that enter the Chesapeake Bay Channel area, propulsion using an engine may be used without penalty when the safety of the boat and crew are jeopardized by barges and pilot boats, provided the boat does not gain a significant advantage in the race.

30.2 Boats using propulsion are required to submit a written description of the event, including the reason for propulsion, the time the engine was started and turned off, the latitude and longitude positions, distance traveled, and the sailing and commercial boats in the vicinity.

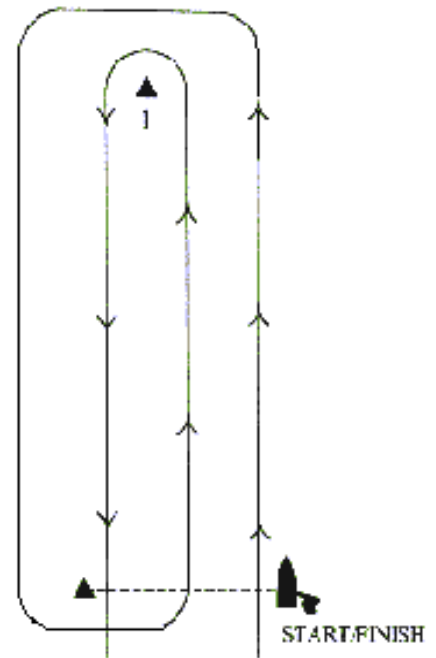
30.3 Documentation must be submitted to the Race Committee or Race Chair within the protest time limit as set in the Special Sailing Instructions for the event.

OLYMPIC TYPE COURSES

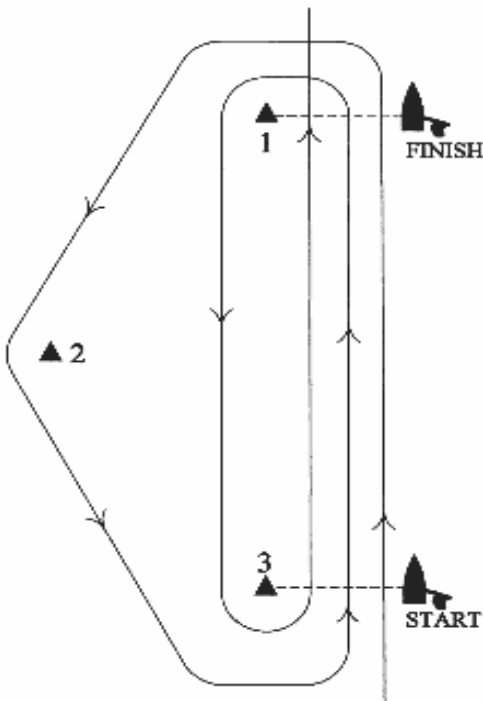
The following diagrams and designating letters comprise the Olympic Type Courses that may be sailed as specified in section 11 of these instructions.



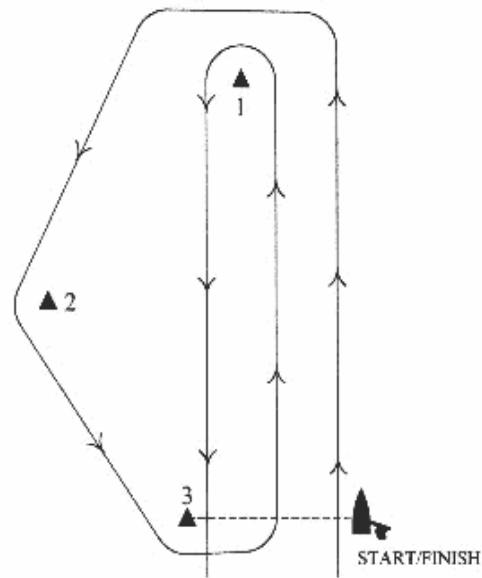
W (RED)



L (RED)



O (RED)



G (RED)

SOUTHERN MARYLAND SAILING ASSOCIATION

ZAHNISER'S WEDNESDAY NIGHT RACES

DATE: April 15 thru September 9 Fun Race – 22 July

FEE: \$350.00 for all races (or \$35.00 per race) **ENTRY DUE:** 1700 day before first race sailed in season

SEND ENTRY TO CONTACT PERSON: Race Chairman – PO Box 262, Solomons, MD 20688

STARTING AREA: The start will be located by the Solomons Gazebo, “X” of the Solomons Area Race Marks.

STARTING LINE: The starting line will be between a yellow flag on the RC boat and the designated adjacent race mark.

FINISH LINE: The finish line will ***EITHER*** be at “X” (pin end) or “Z” between a yellow flag at the end of Zahniser’s “H” Dock and a yellow painted piling across the creek at Calvert Marina.

COURSE: Designated Patuxent River Race Marks. When course has “Z” designated as a finish line, mark “Y” is a mark of the course and must be passed on the channel side. A race may be shortened to finish at Mark “Y” if Mark “Z” was the original finish line.

STARTING SIGNALS:	<u>CLASS</u>	<u>TIME</u>	<u>FLAG</u>	<u>SIGNAL (SOUND)</u>
	Non-Spin (NS)	1825	NS Flag	NS Warning (gun/ sound)
		1826	Code Flag “P” Up	NS Preparatory (gun/ sound)
		1829	“P” Down	(long horn)
		1830	NS Down/ Green Up	NS Start/Green Warning (gun/ sound)
		1831	Code Flag “P” Up	Green Preparatory (gun/ sound)
		1834	“P” Down	(long horn)
	Green Fleet	1835	Green Down/ White Up	GreenStart/WhiteWarning (gun/ sound)
		1836	Code Flag “P” Up	White Preparatory (gun/ sound)
		1839	“P” Down	(long horn)
	White Fleet	1840	White Down	White Start (gun/ sound)

TIME LIMIT: 2.0 hours. Any boat finishing 1 hour after the first boat in class will be scored DNF.

AWARDS/#BOATS STARTING: 1st/3 2nd/5 3rd/7

PROTESTS: Protests shall be lodged with the Race Committee at Zahniser's Yachting Center within one hour of the finish time of the last boat in class or at the time of Race Committee arrival, whichever is later. Any protests not resolved after racing on the Wednesday in which they occurred will be heard on the following Wednesday.

PENALTIES: Two-Turns Penalty (2 tacks and 2 gybes in same direction), RRS 44.2, will apply.

CLASS FLAGS: White fleet will use a 12" x 12" white colored flag. Green fleet will use a 12" x 12" Green colored flag. Non-spinnaker will display a #5 pennant. Classes will display flag 6 feet above deck on backstay.

CLASS PHRF SPLITS:

- White Fleet 119 and below
- Green Fleet 120 and above
- Non-Spinnaker All

ADDITIONAL RACE INFORMATION: Double headsails ***ARE*** permitted for those boats racing non-spinnaker. Boats are required to hail Sail Number and Class while close abeam of committee boat to be considered checked in. At that time, any sailing instruction amendments will be handed out. Boats may change fleets between spinnaker and non-spinnaker, must inform the race committee, and display the appropriate class flag.

OTHER INFORMATION: Awards will be presented at Zahniser's Yachting Center immediately following the race (pending any protest.) Until the Pool Bar opens in May (date TBA), race results will be held at the SMSA Clubhouse. Results will be posted on the website at www.smsa.com. All participants are urged to attend and support our sponsor.

SOUTHERN MARYLAND SAILING ASSOCIATION

SMALL BOAT THURSDAY NIGHT RACES

DATE: May 7 thru September 10

FEE: \$65.00 for all races (or \$15.00 per race) **ENTRY DUE:** 1700 day before first race sailed

SEND ENTRY TO CONTACT PERSON: Race Chairman – PO Box 262, Solomons, MD 20688

STARTING AREA: The starting area will be located in the Patuxent River in front of the Solomons boardwalk.

STARTING LINE: The starting line will be between a yellow flag on the RC boat and the designated adjacent race mark.

FINISH LINE: The finish line will be between a yellow flag on the RC boat and the designated adjacent race mark.

COURSE: Taking into account the types of boats, the number of competitors and weather conditions in the race area, the race course is to be determined by the race committee, it is generally recommended that the race course be windward/leeward.

STARTING SIGNALS: RRS Appendix Q – Sound-Signal Starting System. First signal on the water at 1830.

TIME LIMIT: The time limit is to be determined by the race committee.

AWARDS/#BOATS STARTING: 1st/3 2nd/5 3rd/7

PROTESTS: Protests shall be hailed to the Race Committee immediately following the race in which the infraction occurred. The protest shall then be lodged with the Race Committee at SMSA within one hour of the finish time of the last boat in class or at the time of Race Committee arrival, whichever is later. Protests will be heard ASAP.

PENALTIES: One-Turn Penalty (1 tack and 1 gybe in same direction), RRS Appendix D2.1 (b), will apply.

CLASS PORTSMOUTH SPLITS: The class Portsmouth splits will be determined by the race committee.

ADDITIONAL RACE INFORMATION: Boats are required to hail Sail Number and Class while close abeam of committee boat to be considered checked in. At that time, any sailing instruction amendments will be hailed.

OTHER INFORMATION: Awards will be presented at the SMSA clubhouse immediately following the race (pending any protest.) Results will be posted on the website at www.smsa.com. All participants are urged to attend and support our club.

SOUTHERN MARYLAND SAILING ASSOCIATION

31st ANNUAL SHARPS ISLAND RACE

DATE: 4/25/09

CBYRA SANCTIONED

REGION: 3SE

ENTRY DUE: 1700, 4/24/09

FEE: \$35.00

SEND ENTRY TO: Race Chairman – PO Box 262, Solomons, MD 20688

CONTACT PERSON: Race Chairman, See SMSA Race Program Contacts page.

STARTING LINE: Between the yellow flag on the committee boat and the race buoy in the vicinity of Solomons Area Mark B (# 3, FI G 2.5 sec).

FINISH LINE: *On the channel side* of Solomons Area Mark 'B', between it and a yellow flag on the committee boat. If Race Committee is on station, boats should finish in accordance with SMSA General Sailing Instructions Section 15. If a Race Committee is **NOT** on station, boats are required to take their own finishing times in accordance with these Special Instructions. Finishing time should be taken when Solomons Area Mark 'B' bears 120° magnetic to *port* and is within two overall boat lengths. Each boat will remain in the vicinity of the finish line up to 20 minutes to record the finish time of the next boat. Start and finish times taken from the yacht's **official watch** must be reported to the Race Chairman by 1700, 4/26/09.

COURSE: Round Sharps Island Light to **port** and to the finish line. The official distance is 38.9 nautical miles.

STARTING SIGNALS:	<u>CLASS</u>	<u>TIME</u>	<u>FLAG</u>	<u>SIGNAL (SOUND)</u>
		1000	#5 Pennant Up	N Warning (gun/ sound)
		1001	Code Flag "P" Up	N Preparatory (gun/ sound)
		1004	"P" Down	(long horn)
	PHRF N	1005	#5 Down/#9 Pennant Up	N Start/A-D Warning (gun/ sound)
		1006	Code Flag "P" Up	A-D Preparatory (gun/ sound)
		1009	"P" Down	(long horn)
	PHRF A-D	1010	#9 Down	A-D Start

TIME LIMIT: None

AWARDS/# BOATS STARTING: 1st/3 2nd/5 3rd/7

PROTESTS: Protests shall be lodged with the Race Committee or mailed to the SMSA Race Chairman. Protests must be lodged by 1600, 4/29/09. Protests will be heard at a later time.

ADDITIONAL RACE INFORMATION: Boats are required to hail sail number while close abeam of committee boat to be considered checked in. At this time, any sailing instruction amendments will be handed out.

OTHER INFORMATION: Awards will be presented at a later date, time, and place to be announced. Results will be posted on the website at www.smsa.com and mailed to those who provide a self-addressed stamped envelope.

SOUTHERN MARYLAND SAILING ASSOCIATION

23rd ANNUAL SPRING INVITATIONAL RACE

DATE: 5/02/09

CBYRA SANCTIONED

REGION: 3SE

ENTRY DUE: 1700, 5/01/09

FEE: \$35.00

SEND ENTRY TO: Race Chairman – PO Box 262, Solomons, MD 20688

CONTACT PERSON: Race Chairman, See SMSA Race Program Contacts page.

STARTING LINE: Rendezvous with the committee boat in the vicinity of Solomons Area Mark 'B' (# 3,FI G 2.5 sec). Be alert for Code Flag 'L'. If conditions warrant, the committee boat will proceed to a better starting area where a starting line will be established between the yellow flag on the committee boat and the adjacent race mark.

FINISH LINE: The finish line will be between a yellow flag on the committee boat and the designated adjacent mark.

COURSE: Olympic type course or designated Solomons Area Race Marks.

STARTING SIGNALS:	<u>CLASS</u>	<u>TIME</u>	<u>FLAG</u>	<u>SIGNAL (SOUND)</u>
		1215	"L"	Rendezvous
		1300	#5 Pennant Up	N Warning (gun/ sound)
		1301	Code Flag "P" Up	N Preparatory (gun/ sound)
		1304	"P" Down	(long horn)
	PHRF N	1305	#5 Down/#9 Pennant Up	N Start/A-D Warning (gun/ sound)
		1306	Code Flag "P" Up	A-D Preparatory (gun/ sound)
		1309	"P" Down	(long horn)
	PHRF A-D	1310	#9 Down	A-D Start

SUBSEQUENT RACE(S): Depending on the racing conditions, the Race Committee may elect to run multiple races. Same start sequence as first race with the first signal (#5 Pennant) approximately 10 minutes following the finish of the last boat in the previous race.

TIME LIMIT: The time limit for each race shall be the length of the race divided by 2, expressed in hours. If the course length is more than 5 miles, the time limit shall be 2.5 hours. Follow-on races will not be started after 1630.

SCORING: If multiple races are run, the event shall be scored as a series, using the low point method.

AWARDS/# BOATS STARTING: 1st/3 2nd/5 3rd/7

PROTESTS: Protests shall be lodged with the Race Committee. Protests must be lodged within one hour of either the finishing time of the last boat of the race or the RC boat's docking time, whichever is later. Protests will be heard at a later time.

ADDITIONAL RACE INFORMATION: Boats are required to hail sail number while close abeam of committee boat to be considered checked in. At this time, any sailing instruction amendments will be handed out.

OTHER INFORMATION: Awards will be presented at a later date, time, and place to be announced. Results will be posted on website at www.smsa.com and mailed to those who provide a self-addressed stamped envelope.

SOUTHERN MARYLAND SAILING ASSOCIATION

DOUBLE-HANDED RACE

DATE: 5/09/09

ENTRY DUE: 1700, 5/08/09

FEE: \$35.00

SEND ENTRY TO: Race Chairman – PO Box 262, Solomons, MD 20688

CONTACT PERSON: Race Chairman, See SMSA Race Program Contacts page.

ELIGIBILITY: Only two people are allowed per yacht. Cruisers that do not have a valid 2009 PHRF certificate are allowed to race and will be assigned a PHRF rating based on 2009 available data. All entrants are eligible for trophies.

STARTING LINE: Between the yellow flag on the committee boat and the race buoy in the vicinity of Solomons Area Mark 'B' (# 3,FI G 2.5 sec). If weather conditions dictate, race committee may move start area to Wednesday night starting area 'X'. Be alert for code flag 'L'.

FINISH LINE: The finish line will be between the yellow flag on the committee boat and the designated adjacent mark.

COURSE: From starting area near mark 'B', Solomons Area Race Marks C, H, I, E and back to finish area near B. All marks to be **port** roundings. If code flag 'R' (red with yellow cross) displayed on the committee boat, the course will be sailed in reverse with **starboard** roundings. Official distance is 12.5 nm. If race committee moves course to river marks, the course will be as designated by race committee.

STARTING SIGNALS:	<u>CLASS</u>	<u>TIME</u>	<u>FLAG</u>	<u>SIGNAL (SOUND)</u>
		0915	"L"	Rendezvous
		1000	#5 Pennant Up	N Warning (gun/ sound)
		1001	Code Flag "P" Up	N Preparatory (gun/ sound)
		1004	"P" Down	(long horn)
	PHRF N	1005	#5 Down/#9 Pennant Up	N Start/Spin Warning (gun/ sound)
		1006	Code Flag "P" Up	Spin Preparatory (gun/ sound)
		1009	"P" Down	(long horn)
	PHRF A-D	1010	#9 Down	Spin Start (gun/ sound)

TIME LIMIT: The time limit will be six hours if Solomons Area Race Marks are used. If river marks are designated, time limit will be the length of the course divided by 2 expressed in hours.

AWARDS # BOATS STARTING: 1st/3 2nd/5 3rd/7

PROTESTS: Protests shall be lodged with the Race Committee. Protests must be lodged within one hour of either the finishing time of the last boat of the race or the RC boat's docking time, whichever is later. Protests will be heard at a later time.

ADDITIONAL RACE INFORMATION: Boats are required to hail sail number while close abeam of race committee boat to be considered check in. At this time, any sailing instruction amendments will be handed out. Autopilots or windvane steering devices are not allowed. Double headsails are allowed in the non-spinnaker section.

OTHER INFORMATION: Awards will be presented at a later date, time, and place to be announced. Results will be posted on the website at www.smsa.com, and mailed to those who provide a self-addressed stamped envelope.

SOUTHERN MARYLAND SAILING ASSOCIATION

5th ANNUAL FROST-GOODE RACE

DATE: 5/16/09

SMSA High Point

ENTRY DUE: 1700, 5/15/09

FEE: \$35.00

SEND ENTRY TO: Race Chairman – PO Box 262, Solomons, MD 20688

CONTACT PERSON: Race Chairman, See SMSA Race Program Contacts page.

STARTING LINE: Rendezvous with the committee boat in the vicinity of the Gazebo mark. A starting line will be established between the yellow flag on the committee boat and the adjacent race mark.

FINISH LINE: The finish line will be between the yellow flag on the committee boat and the designated adjacent mark. If the course is not shortened, the adjacent mark is the Gazebo mark.

COURSE: Up the Patuxent River to a port rounding of the National Data Buoy Center's Weather Buoy Station 44044- Patuxent River at 38.389 N, 76.526 W (38 degrees 23' 19" N, 76 degrees 31' 35" W). If this mark is no longer available, the RC will drop a mark at the location. The T. Johnson Bridge must be traversed via any of the three highest spans in both directions. All river marks must be honored. If the course is not shortened, the official distance is 10.4 nautical miles.

STARTING SIGNALS:	CLASS	TIME	FLAG	SIGNAL (SOUND)
		1200	#4 Pennant Up	Corinthian Warning (gun/sound)
		1201	Code Flag "P" Up	Corinthian Preparatory (gun/sound)
		1204	"P" Down	(long horn)
	Corinthian	1205	#4 Down/#5 Pennant Up	Corinthian Start/N Warning(gun/sound)
		1206	Code Flag "P" Up	N Preparatory (gun/sound)
		1209	"P" Down	(long horn)
	PHRF N	1210	#5 Down/#9 Pennant Up	N Start/Spin Warning (gun/sound)
		1211	Code Flag "P" Up	A-D Preparatory (gun/sound)
		1214	"P" Down	(long horn)
	PHRF A-D	1215	#9 Down	A-D Start (gun/sound)

CORINTHIAN CLASS: Information about the new PHRF Corinthian class is available from the Race Chairman. A provisional PHRF rating will be assigned for those without a rating given early race registration. Contact the Race Chairman for more information; See SMSA Race Program Contacts page.

TIME LIMIT: The time limit for the race shall be 4.0 hrs. Boats not finishing within 1 hour of the first boat to finish in their class will be scored as "Did Not Finish".

SERIES AWARDS/# BOATS STARTING: 1st/3 2nd/5 3rd/7 4th/12

PROTESTS: Protests shall be lodged with the Race Committee. Protests must be lodged within one hour of either the finishing time of the last boat of the race or the RC boat's docking time, whichever is later. Protests will be heard at a later time.

PENALTIES: The 720° turns penalty, RRS 44.2, will apply.

ADDITIONAL RACE INFORMATION: Boats are required to hail sail number while close abeam of committee boat to be considered checked in. At this time, any sailing instruction amendments will be handed out.

SOCIAL INFORMATION: Participants are invited to rendezvous afterward at the SMSA clubhouse and encouraged to raft up at SMSA dock creek-side. BYOPL (bring your Pot Luck Dish to share).

OTHER INFORMATION: Informal awards will be presented at the post-race rendezvous together with preliminary race results. Formal awards will be presented at a later date, time, and place to be announced. Results will be posted on the website at www.smsa.com and mailed to those who provide a self-addressed stamped envelope.

SOUTHERN MARYLAND SAILING ASSOCIATION

WOMEN'S SPRING SERIES

DAY 1: 5/30/09

DAY 2: 5/31/09

ENTRY DUE: 1700 5/29/09

FEE: \$35.00

SEND ENTRY TO: Race Chairman – PO Box 262, Solomons, MD 20688

CONTACT PERSON: Race Chairman, See SMSA Race Program Contacts page.

ELIGIBILITY: The following special criteria shall apply for all racing boats:

1. Each Racing boat shall be under the command and steered by a **female skipper** from the preparatory signal of her class until she finishes the race.
2. Those boats with a **male on board** will receive a rating penalty of 5 seconds per mile.

SKIPPER'S MEETING: Friday, May 29th at 1800 at SMSA Clubhouse.

STARTING LINE: Rendezvous with the committee boat in the vicinity of Solomons Area Mark 'B' (# 3, FI G 2.5 sec). Be alert for Code Flag 'L'. If conditions warrant, the committee boat will proceed to a better starting area where a starting line will be established between the yellow flag on the committee boat and the adjacent race mark.

FINISH LINE: The finish line will be located between the yellow flag on the committee boat and the designated adjacent race mark.

COURSE: Olympic type course or designated Solomons area race marks.

STARTING SIGNALS:	CLASS	TIME	FLAG	SIGNAL (SOUND)
		0915	"L"	Rendezvous
		1000	#5 Pennant Up	N Warning (gun/ sound)
		1001	Code Flag "P" Up	N Preparatory (gun/ sound)
		1004	"P" Down	(long horn)
	PHRF N	1005	#5 Down/#9 Pennant Up	N Start/Spin Warning (gun/ sound)
		1006	Code Flag "P" Up	A-D Preparatory (gun/ sound)
		1009	"P" Down	(long horn)
	PHRF A-D	1010	#9 Down	A-D Start (gun/ sound)

SUBSEQUENT RACE(S): If time permits, multiple races may be run on either race day. Same start sequence as first race with the first signal (#5 Pennant) approximately 10 minutes following the finish of the last boat in the previous race. No races shall be started after 1500 either day.

TIME LIMIT: The time limit for each race shall be 2.0 hrs. Boats not finishing within 45 minutes of the first boat to finish in their fleet shall be scored as "Did Not Finish".

PENALTIES: The 2-turns penalty, RRS 44.2, will apply.

PROTESTS: Protests shall be lodged with the Race Committee. Protests must be lodged within one hour of either the finishing time of the last boat of the race or the RC boat's docking time, whichever is later. Protests will be heard at a later time.

SERIES AWARDS/# BOATS STARTING: 1st/3 2nd/5 3rd/7

ADDITIONAL RACE INFORMATION: Boats are required to hail sail number while close abeam of committee boat to be considered checked in. At this time, any sailing instruction amendments will be handed out. Racing boats are to declare to the Race Committee any male aboard. A boat not having a PHRF rating will be assigned a provisional rating for this event. Please contact the Race Chairman in advance of your intent to race to allow for adequate time for provisional rating assignment. In the case where a class does not race, the same starting sequence will be followed, as if the class were racing.

NOTE: SEE NEXT PAGE FOR ADDITIONAL INFORMATION

WOMEN'S SPRING SERIES (cont'd)

OTHER INFORMATION: Although one man is allowed on board, the intention of this race is to encourage women's sailing and should be promoted as such. Results will be posted on the website at www.smsa.com. Awards will be presented at a later date, time, and place to be announced.

SOCIAL INFORMATION: Competitors and crew are invited to the annual Luau Rendezvous at Zahniser's Marina following Saturday's racing. Please bring a dish to share for you and your crew. A mini-rendezvous will be held at the SMSA Clubhouse after the racing on Sunday where provisional results will be announced. BYOS (Bring Your Own Snacks).

SOUTHERN MARYLAND SAILING ASSOCIATION

32st ANNUAL LITTLE CHOPTANK RACE

DATE: 6/13/09

CBYRA SANCTIONED

REGION: 3SE

ENTRY DUE: 1700, 6/12/09

FEE: \$35.00

SEND ENTRY TO: Race Chairman – PO Box 262, Solomons, MD 20688

CONTACT PERSON: Race Chairman, See SMSA Race Program Contacts page.

STARTING LINE: Between the yellow flag on the committee boat and the race buoy in the vicinity of Solomons Area Mark 'B' (# 3, FI G 2.5 sec).

COURSE: Round "1PR" and R "78" to **port**, and to the finish. If code flag "R" (red with yellow cross) is displayed on the committee boat, the course will be sailed in **reverse order and side**. The official distance is 32.5 nautical miles.

FINISH LINE: On the **channel side** of Solomons Area Mark 'B', between it and a yellow flag on the committee boat. If Race Committee is on station, boats should finish in accordance with SMSA General Sailing Instructions Section 15. If a Race Committee is **NOT** on station, boats are required to take their own finishing times in accordance with these Special Instructions. Finishing time should be taken when Solomons Area Mark 'B' bears 120° magnetic to **port** and is within two overall boat lengths. If the course was reversed, finishing time should be taken when Solomons Area Mark 'B' bears 210° magnetic to **port** and is within two overall boat lengths. Each boat will remain in the vicinity of the finish line up to 20 minutes to record the finish time of the next boat. Start and finish times taken from the yacht's **official watch** must be reported to the Race Chairman by 1700, 6/14/09.

STARTING SIGNALS:	CLASS	TIME	FLAG	SIGNAL (SOUND)
		1000	#5 Pennant Up	N Warning (gun/ sound)
		1001	Code Flag "P" Up	N Preparatory (gun/ sound)
		1004	"P" Down	(long horn)
	PHRF N	1005	#5 Down/#9 Pennant Up	N Start/A-D Warning (gun/ sound)
		1006	Code Flag "P" Up	A-D Preparatory (gun/ sound)
		1009	"P" Down	(long horn)
	PHRF A-D	1010	#9 Down	A-D Start (gun/ sound)

TIME LIMIT: None

AWARDS/# BOATS STARTING: 1st/3 2nd/5 3rd/7

PROTESTS: Protests shall be lodged with the Race Committee or mailed to the SMSA Race Chairman. Protests must be filed by 1600, 6/15/09. Protests will be heard at a later time.

ADDITIONAL RACE INFORMATION: Boats are required to hail sail number while close abeam of committee boat to be considered checked in. At this time, any sailing instruction amendments will be handed out.

OTHER INFORMATION: Awards will be presented at a later date, time, and place to be announced. Results will be and posted on the website at www.smsa.com and mailed to those who provide a self-addressed stamped envelope.

SOUTHERN MARYLAND SAILING ASSOCIATION

VICE COMMODORE'S CUP

DATE: 6/19/09

ENTRY DUE: 1700, 6/18/09

FEE: \$35.00

SEND ENTRY TO: Race Chairman – PO Box 262, Solomons, MD 20688

CONTACT PERSON: Race Chairman, See SMSA Race Program Contacts page.

STARTING LINE: Between the yellow flag on the committee boat and the race buoy in the vicinity of Solomons Area Mark 'B' (# 3, FI G 2.5 sec.)

COURSE: Leave to **starboard**: "1PR" FI G 4sec, Point-No-Point Light, Point Lookout Light, and St. Mary's River Junction Red and Green Buoy (FI [2+1] R 6 sec.) In addition, St. Mary's River lighted day markers 1 shall be passed on the **channel** side. No other marks need to be honored. Official race distance is 33.25 nm.

FINISH LINE: Abeam St. Mary's lighted day marker 1 when bearing is read 270 degrees and within two boat lengths of the mark. Any yacht finishing after the race committee has left station shall take her own time (using the yacht's **official watch**) and report her time immediately to the race committee. Yachts finishing in darkness shall illuminate sail numbers for identification purposes. All yachts shall make an attempt to record the finishers immediately ahead and behind them.

STARTING SIGNALS:	CLASS	TIME	FLAG	SIGNAL (SOUND)
		1830	#5 Pennant Up	N Warning (gun/ sound)
		1831	Code Flag "P" Up	N Preparatory (gun/ sound)
		1834	"P" Down	(long horn)
	PHRF N	1835	#5 Down/#9 Pennant Up	N Start/A-D Warning (gun/ sound)
		1836	Code Flag "P" Up	A-D Preparatory (gun/ sound)
		1839	"P" Down	(long horn)
	PHRF A-D	1840	#9 Down	A-D Start (gun/ sound)

TIME LIMIT: None

AWARDS/# BOATS STARTING: 1st/3 2nd/5 3rd/7

PROTESTS: Protests shall be lodged with the Race Committee (if on station) or mailed to the SMSA Race Chairman. Protests must be lodged by 1700, 6/22/09. Protests will be heard at a later time.

ADDITIONAL RACE INFORMATION: Boats are required to hail sail number while close abeam of committee boat to be considered checked in. At this time, any sailing instruction amendments will be handed out. At finish please use cautions for unlighted boats moored in Horseshoe Bend, and respect other mariners who may be sleeping in close proximity.

OTHER INFORMATION: Awards will be presented at a later date, time and place to be announced. Results will be posted on the website at www.smsa.com.

SOCIAL INFORMATION: SMSA plans a Small Boat Fun Day Saturday afternoon using St. Mary's College dinghies. Participants are also invited to attend a happy hour/rendezvous at St. Mary's College on Saturday at 1600 hosted by the SMSA. Please bring a dish to share and your beverage of choice.

SOUTHERN MARYLAND SAILING ASSOCIATION

SMALL BOAT SUMMER ONE DAY REGATTA

DATE: 6/27/09

ENTRY DUE: 1000, 6/27/09

FEE: \$25.00 (Included with annual race fee)

SEND ENTRY TO: Race Chairman – PO Box 262, Solomons, MD 20688

CONTACT PERSON: Race Chairman, See SMSA Race Program Contacts page.

SKIPPER MEETING: There will be a Skippers Meeting at 1000 on Saturday 6/27/09 at the SMSA Clubhouse

STARTING AREA: Taking into account the types of boats, the number of competitors and weather conditions in the race area, the starting area is to be determined by the race committee.

STARTING LINE: The starting line will be between a yellow flag on the RC boat and the designated adjacent race mark.

FINISH LINE: The finish line will be between a yellow flag on the RC boat and the designated adjacent race mark.

COURSE: Taking into account the types of boats, the number of competitors and weather conditions in the race area, the race course is to be determined by the race committee, it is generally recommended that the race course be windward/leeward.

STARTING SIGNALS: RRS Appendix Q – Sound-Signal Starting System

TIME LIMIT: Taking into account the types of boats, the number of competitors and weather conditions in the race area, the time limit is to be determined by the race committee.

AWARDS/#BOATS STARTING: 1st/3 2nd/5 3rd/7

PROTESTS: Protests shall be hailed to the Race Committee immediately following the race in which the infraction occurred. The protest shall then be lodged with the Race Committee at SMSA within one hour of the finish time of the last boat in class or at the time of Race Committee arrival, whichever is later. Protests will be heard ASAP.

PENALTIES: One-Turn Penalty (1 tack and 1 gybe in same direction), RRS Appendix D2.1 (b), will apply.

CLASS FLAGS: Not Used

CLASS PORTSMOUTH SPLITS: Taking into account the types of boats, the number of competitors and weather conditions in the race area, the class Portsmouth splits are to be determined by the race committee.

ADDITIONAL RACE INFORMATION: Boats are required to hail Sail Number and Class while close abeam of committee boat to be considered checked in. At that time, any sailing instruction amendments will be hailed.

OTHER INFORMATION: Awards will be presented at the SMSA clubhouse immediately following the race (pending any protest.) Results will be posted on the website at www.smsa.com. All participants are urged to attend and support our club.

SOUTHERN MARYLAND SAILING ASSOCIATION

37th ANNUAL SUMMER INVITATIONAL RACE

DATE: 6/28/09

CBYRA SANCTIONED

REGION: 3SE

ENTRY DUE: 1700, 6/27/09

FEE: \$35.00

SEND ENTRY TO: Race Chairman – PO Box 262, Solomons, MD 20688

CONTACT PERSON: Race Chairman, See SMSA Race Program Contacts page.

STARTING LINE: Rendezvous with the committee boat in the vicinity of SMSA 'B' (# 3, FI G 2.5 sec). Be alert for Code Flag 'L'. If conditions warrant, the committee boat will proceed to a better starting area where a starting line will be established between the yellow flag on the committee boat and the adjacent race mark.

FINISH LINE: The finish line will be located between the yellow flag on the committee boat and the designated adjacent mark.

COURSE: Olympic type course or designated Solomons Area Race Marks.

STARTING SIGNALS:	CLASS	TIME	FLAG	SIGNAL (SOUND)
		1215	"L"	Rendezvous
		1300	#5 Pennant Up	N Warning (gun/ sound)
		1301	Code Flag "P" Up	N Preparatory (gun/ sound)
		1304	"P" Down	(long horn)
	PHRF N	1305	#5 Down/#9 Pennant Up	N Start/A-D Warning (gun/ sound)
		1306	Code Flag "P" Up	A-D Preparatory (gun/ sound)
		1309	"P" Down	(long horn)
	PHRF A-D	1310	#9 Down	A-D Start (gun/ sound)

SUBSEQUENT RACE(S): Depending on the racing conditions, the Race Committee may elect to run multiple races. Same start sequence as first race with the warning signal (#5 Pennant) approximately 10 minutes following the finish of the last boat in the previous race.

TIME LIMIT: The time limit for each race shall be the length of the race divided by 2, expressed in hours. If the course length is more than 5 miles, the time limit shall be 2.5 hours. No races will be started after 1600.

SCORING: If multiple races are run, the event shall be scored as a series, using the low point method.

AWARDS/# BOATS STARTING: 1st/3 2nd/5 3rd/7

PROTESTS: Protests shall be lodged with the Race Committee. Protests must be lodged within one hour of either the finishing time of the last boat of the race or the RC boat's docking time, whichever is later. Protests will be heard at a later time.

ADDITIONAL RACE INFORMATION: Boats are required to hail sail number while close abeam of committee boat to be considered checked in. At this time, any sailing instruction amendments will be handed out.

OTHER INFORMATION: Awards will be presented at a later date, time, and place to be announced. Results will be posted on the website at www.smsa.com and mailed to those who provide a self-addressed stamped envelope.

SOCIAL INFORMATION: Participants are invited to a mini-rendezvous on Sunday at the SMSA Clubhouse. BYOS (bring your own snacks).

SOUTHERN MARYLAND SAILING ASSOCIATION

STARS AND STRIPES RACE

DATE: 7/5/09

CBYRA SANCTIONED

REGION: 3SE

ENTRY DUE: 1700, 7/3/09

FEE: \$35.00

SEND ENTRY TO: Race Chairman – PO Box 262, Solomons, MD 20688

CONTACT PERSON: Race Chairman, See SMSA Race Program Contacts page.

STARTING LINE: Rendezvous with the committee boat in the vicinity of Solomons Area Mark 'B' (# 3, FI G 2.5 sec). Be alert for Code Flag 'L'. If conditions warrant, the committee boat will proceed to a better starting area where a starting line will be established between the yellow flag on the committee boat and the adjacent race mark.

FINISH LINE: The finish line will be located between the yellow flag on the committee boat and the designated adjacent mark.

COURSE: Olympic type course or designated Solomons Area Race Marks.

STARTING SIGNALS:	<u>CLASS</u>	<u>TIME</u>	<u>FLAG</u>	<u>SIGNAL (SOUND)</u>
		1115	"L"	Rendezvous
		1200	#5 Pennant Up	N Warning (gun/ sound)
		1201	Code Flag "P" Up	N Preparatory (gun/ sound)
		1204	"P" Down	(long horn)
	PHRF N	1205	#5 Down/#9 Pennant Up	N Start/A-D Warning (gun/ sound)
		1206	Code Flag "P" Up	A-D Preparatory (gun/ sound)
		1209	"P" Down	(long horn)
	PHRF A-D	1210	#9 Down	A-D Start (gun/ sound)

TIME LIMIT: 3.0 hours or (course length)/2, expressed in hours, whichever is greater.

AWARDS/# BOATS STARTING: 1st/3 2nd/5 3rd/7

PROTESTS: Protests shall be lodged with the Race Committee. Protests must be lodged within one hour of either the finishing time of the last boat of the race or the RC boat's docking time, whichever is later. Protests will be heard at a later time.

ADDITIONAL RACE INFORMATION: Boats are required to hail sail number while close abeam of committee boat to be considered checked in. At this time, any sailing instruction amendments will be handed out.

OTHER INFORMATION: Awards will be presented at a later date, time, and place to be announced. Results will be posted on the website at www.smsa.com and mailed to those who provide a self-addressed stamped envelope.

SOCIAL INFORMATION: Participants are invited to a mini-rendezvous at the SMSA Clubhouse. BYOS (bring your own snacks).

SOUTHERN MARYLAND SAILING ASSOCIATION

17th ANNUAL SCREWPILE LIGHTHOUSE CHALLENGE

DAY 1: 7/19/09
DAY 2: 7/20/09
DAY 3: 7/21/09

CBYRA SANCTIONED
CBYRA SANCTIONED
CBYRA SANCTIONED

REGION: 3SE
REGION: 3SE
REGION: 3SE

ENTRY DUE: Entries shall be submitted on the official entry form only and received no later than 1200 hours, Wednesday, 01 July 2009. Entries received after 1200 hours, Wednesday, 08 July 2009 will include a late fee of \$50. No entries accepted after 1200 noon Wednesday, 15 July 2009. No refunds. Copy of PHRF rating certificate is required with entry. Entry form available at www.screwpile.net, by mail, or in the CBYRA Greenbook.

SEND TO: Screwpile Challenge 2009
P.O. Box 66
Hollywood, MD 20736

ENTRY FEE: See www.screwpile.net

CONTACT PERSON: L. G. Raley (301) 373-5700 (H), (301) 862-3100 (W), (301) 862-3298 (Fax)

RENDEZVOUS: Harbor start 0900. Course location for each fleet will be specified in the Screwpile Sailing Instructions.

START: Races anticipated to start at 10:30. See Screwpile Sailing Instructions.

COURSE: Drop Mark type courses. See Screwpile Sailing Instructions.

SIGNALS: See the Screwpile Sailing Instructions for the order and times of the starts for each class.

CLASSES: Class splits for all fleets will be made according to the number of entries received. Starts will be offered for (but are not limited to) the following classes:

PHRF A, B, C, D	J/105	J/35
PHRF N	Farr 30	Catalina 27
J/30	Beneteau 36.7	Multihull

OTHER CLASSES WELCOME. A minimum of 8 boats is required per class. See Screwpile Notice of Race.

AWARDS: 1st, 2nd, and 3rd in class awarded each day at the post race party. Overall Series Awards to be presented at the post race party, Tuesday, 21 July. The "Boat of the Week" will be awarded the Calvert County Trophy at the post race party on Tuesday, 21 July 2009.

PROTESTS: Consult Screwpile Sailing Instructions.

SOCIAL INFORMATION: Post-race party each day in the Cabana/Courtyard area of the Solomons Holiday Inn Select.

OTHER: The EYC Solomons Island Race will serve as a feeder to this event. See Screwpile's website at www.screwpile.net for up-to-date entry, results and social information. **All information provided at www.screwpile.net overrides any information provided here.**

SOUTHERN MARYLAND SAILING ASSOCIATION

PATUXENT RIVER REGATTA

DATE: 8/09/09

FEE: \$35.00

ENTRY DUE: 1700 8/08/08

SEND ENTRY TO: Race Chairman – PO Box 262, Solomons, MD 20688

CONTACT PERSON: Race Chairman, See SMSA Race Program Contacts page.

ELIGIBILITY: All boats must be a minimum of 20 feet in hull length and be a single hulled cruising type, self-righting, with enclosed cabin. Classes will be split between Spinnaker and Non-Spinnaker fleets.

START/FINISH LINE: Rendezvous with the committee boat in the vicinity of the Gazebo mark. A starting line will be established between the yellow flag on the committee boat and the adjacent race mark. Expect multiple races.

STARTING SIGNALS:	CLASS	TIME	FLAG	SIGNAL (SOUND)
		1030	#5 Pennant	NonSpin Warning (gun/sound)
		1031	Code Flag "P" Up	NonSpin Preparatory (gun/sound)
		1034	"P" Down	(long horn)
	NS Fleet	1035	#5 Down/#9 Flag Up	NS Start/Spin Warning (gun/sound)
		1036	Code Flag "P" Up	Spin Preparatory (gun/sound)
		1039	"P" Down	(long horn)
	Spin Fleet	1040	#9 Down	Spin Start (gun/sound)

SUBSEQUENT RACE(S): Same start sequence as first race with warning signal approximately 10 minutes following finish of the last boat in the previous race.

TIME LIMIT: The time limit for each race shall be 2.0 hrs. Boats not finishing within 45 minutes of the first boat to finish in each class will be scored as DNF.

AWARDS/# BOATS STARTING: 1st/3 2nd/5 3rd/7

PROTESTS: Protests shall be lodged with the Race Committee within one hour of either the finishing time of the last boat of the race or the Race Committee arrival, whichever is later. Protests will be heard as soon as possible.

ADDITIONAL RACE INFORMATION: It is the intention of the RC to run multiple races using Solomons River or drop marks. A maximum of four races may be run.

OTHER INFORMATION: Awards will be presented at a later date, time, and place to be announced. Results will be posted on the website at www.smsa.com and mailed to those who provide a self-addressed stamped envelope.

SOCIAL INFORMATION: All participants are invited to a post-race gathering at the SMSA Clubhouse.

SOUTHERN MARYLAND SAILING ASSOCIATION

RACE TO HERRINGTON HARBOUR

DATE: 8/15/09

FEE: \$35.00

ENTRY DUE: 1700 8/14/08

SEND ENTRY TO: Race Chairman – PO Box 262, Solomons, MD 20688

CONTACTS: Race Chairman, See SMSA Race Program Contacts page

STARTING LINE: Between the yellow flag on the committee boat and the race buoy in the vicinity of Solomons Area Mark 'B' (# 3, FI G 2.5 sec).

COURSE: Solomons Area Mark "G" shall be passed to **port** and to the finish line. The official distance is 26.1 nautical miles.

FINISH LINE: On the channel side of G "81 A," between it and an orange flag on the committee boat. If Race Committee is on station, boats should finish in accordance with SMSA General Sailing Instructions Section 15. If a Race Committee is **NOT** on station, boats are required to take their own finishing times in accordance with these Special Instructions. Finishing time should be taken when G "81 A" bears 270° magnetic to **port** and is within two overall boat lengths. Each boat will remain in the vicinity of the finish line up to 20 minutes to record the finish time of the next boat. Start and finish times taken from the yacht's **official watch** must be reported to the Race Chairman by 1700, 8/18/09.

STARTING SIGNALS:	CLASS	TIME	FLAG	SIGNAL (SOUND)
		0900	#4 Pennant Up	Corinthian Warning (gun/ sound)
		0901	Code Flag "P" Up	Corinthian Preparatory (gun/ sound)
		0904	"P" Down	(long horn)
	Corinthian	0905	#4 Down	Corinthian Start (gun/ sound)
		1000	#5 Pennant Up	N Warning (gun/ sound)
		1001	Code Flag "P" Up	N Preparatory (gun/ sound)
		1004	"P" Down	(long horn)
	PHRF N	1005	#5 Down/#9 Pennant Up	N Start/A-D Warning (gun/ sound)
		1006	Code Flag "P" Up	A-D Preparatory (gun/ sound)
		1009	"P" Down	(long horn)
	PHRF A-D	1010	#9 Down	A-D Start (gun/ sound)

TIME LIMIT: Boats not finished by **1900** shall be scored "Time Limit Expired," TLE. TLE shall be equal to the number of finishers plus one.

AWARDS/# BOATS STARTING: 1st/3 2nd/5 3rd/7

PROTESTS: Protests shall be lodged with the Race Committee or mailed to the SMSA Race Chairman. Protests must be filed by 1600, 8/20/09. Protests will be heard at a later time.

ADDITIONAL RACE INFORMATION: Boats are required to hail sail number while close abeam of committee boat to be considered checked in. At this time, any sailing instruction amendments will be handed out.

OTHER INFORMATION: Awards will be presented at a later date, time, and place to be announced. Results will be and posted on the website at www.smsa.com and mailed to those who provide a self-addressed stamped envelope.

Competitors are strongly urged to coordinate their overnight slip arrangements early with the Herrington Harbour South Transient Desk at (301) 855-8399. The marina is now accepting reservations.

SOCIAL INFORMATION: Participants are invited to attend a barbeque hosted by the Herrington Harbour Sailing Association (HHSA) at Herrington Harbour South on Saturday; a Social Hour will begin at 1700 with dinner served at 1930. The cost will be \$10 per person, which will cover food and drinks.

SOUTHERN MARYLAND SAILING ASSOCIATION

HERRINGTON HARBOUR BLIND DINGHY RACE

DATE: 8/16/09

FEE: None

RACE INFORMATION: On Sunday at 0830, Herrington Harbour Sailing Association (HHSA) will host an HHSA versus SMSA blindfolded dinghy-rowing regatta on the beach at Herrington Harbour South.

SOCIAL INFORMATION: Breakfast will immediately follow the competition. Details of the Dinghy Regatta and Breakfast will be provided in early August. There will be no charge for either activity.

OTHER INFORMATION: A casual sail for those who did the Race To Herrington Harbour will occur after breakfast.

SOUTHERN MARYLAND SAILING ASSOCIATION

MIXED COUPLES RACE

DATE: 8/22/09

SEND ENTRY TO: Race Chairman – PO Box 262, Solomons, MD 20688

CONTACTS: Race Chairman, See SMSA Race Program Contacts page

ELIGIBILITY: This is an informal race. No entry fee or form is required, but prior notification is requested. The crew of a participating yacht must be one man and one woman. A provisional rating will be assigned if a yacht does not have a valid PHRF rating. Participants are strongly encouraged to contact the Race Chairman or the assigned Race Committee prior to this event for specific instructions.

STARTING TIME: The starting window will be between 10:00 am and 10:30 am. Each participant shall record his or her own time at the Starting Line.

STARTING LINE: When Red #6A at Sandy Point is within two boat lengths and bears 40° off the bow, or between #6A and a committee boat if it is on station.

FINISH LINE: Red #18 off Battle Creek. Each boat shall record its own finish time when Red #18 is within two boat lengths and bears 070° off the bow.

COURSE: Sandy Point “6A” to “18” off Battle Creek. All yachts must sail to the channel side of all river marks. Official course length from #6A to #18 is 10.42nm.

STARTING SIGNALS: None. Self start between 1000 and 1030 with time recorded.

TIME LIMIT: None

CLASSES: Spin and Non-Spin

AWARDS/# BOATS STARTING: 1st/3 2nd/5 3rd/7

PROTESTS: See contact person(s) for instructions.

ADDITIONAL RACE INFORMATION: Only two people may sail the boat, but other people may be on-board and may move about the boat wherever they or the skipper choose. They may serve as “Gofers/Cabana Boys/BBs” or galley hands, but they may not in any way assist in the actual sailing of the boat while it is racing. Report start and finish times to the Race Committee after the finish of the race.

If participants wish, there may be an informal “pursuit” race back to Solomons on Sunday with a mini-rendezvous at Zahniser’s Pool Bar at the end of the race. A well-timed, staggered start, based on PHRF ratings, will allow a convergence at the finish line, Red #6A. For the race back to Solomons on Sunday, there are no restrictions on how many crewmembers can race the boat. Results for the Sunday race will be announced at a date to be determined.

OTHER INFORMATION: Race Committee can determine the awards presented. Results will be published on the website at www.smsa.com and mailed to those who provide a self-addressed stamped envelope.

SOUTHERN MARYLAND SAILING ASSOCIATION

33rd ANNUAL SMITH POINT RACE

DATE: 8/29/09

CBYRA SANCTIONED

REGION: 3SE

ENTRY DUE: 1700, 8/28/09

FEE: \$35.00

SEND ENTRY TO: Race Chairman – PO Box 262, Solomons, MD 20688

CONTACT PERSON: Race Chairman, See SMSA Race Program Contacts page.

STARTING LINE: Between the yellow flag on the committee boat and the race buoy in the vicinity of Solomons Area Mark 'B' (# 3, FI G 2.5 sec).

FINISH LINE: *On the channel side* of Solomons Area Mark 'B', between it and a yellow flag on the committee boat. If Race Committee is on station, boats should finish in accordance with SMSA General Sailing Instructions Section 15. If a Race Committee is **NOT** on station, boats are required to take their own finishing times in accordance with these Special Instructions. Finishing time should be taken when Solomons Area Mark 'B' bears 210° magnetic to *port* and is within two overall boat lengths. Each boat will remain in the vicinity of the finish line up to 20 minutes to record the finish time of the next boat. Start and finish times taken from the yacht's **official watch** must be reported to the Race Chairman by 1700, 8/31/09.

COURSE: PHRF A, B, C and D: Round Smith Point Light to **port** and to the finish line. Solomons Area Mark 'C' ("1PR", FI G 4 sec.) is to be passed on channel side at all times. The official distance is 59.0 nautical miles.

PHRF N: Round Buoy "70" (FI R 4 sec) to **port** and to the finish line. Solomons Area Mark 'C' ("1PR", FI G 4 sec.) is to be passed on channel side at all times. The official distance is 42.0 nautical miles.

STARTING SIGNALS:	CLASS	TIME	FLAG	SIGNAL (SOUND)
		1000	#5 Pennant Up	N Warning (gun/ sound)
		1001	Code Flag "P" Up	N Preparatory (gun/ sound)
		1004	"P" Down	(long horn)
	PHRF N	1005	#5 Down/#9 Pennant Up	N Start/A-D Warning (gun/ sound)
		1006	Code Flag "P" Up	A-D Preparatory (gun/ sound)
		1009	"P" Down	(long horn)
	PHRF A-D	1010	#9 Down	A-D Start (gun/ sound)

TIME LIMIT: None

AWARDS/# BOATS STARTING: 1st/3 2nd/5 3rd/7

PROTESTS: Protests shall be lodged with the Race Committee or mailed to the SMSA Race Chairman. Protests must be lodged by 1600, 8/31/09. Protests will be heard at a later time.

ADDITIONAL RACE INFORMATION: Boats are required to hail sail number while close abeam of committee boat to be considered checked in. At this time, any sailing instruction amendments will be handed out.

OTHER INFORMATION: Awards will be presented at a later date, time, and place to be announced. Results will be posted on the website a www.smsa.com, and mailed to those who provide a self-addressed stamped envelope.

SOUTHERN MARYLAND SAILING ASSOCIATION

13th ANNUAL SMALL BOAT INVITATIONAL REGATTA

DATE: 9/19/09, 9/20/09

ENTRY DUE: 0930, 9/19/09 **FEE:** \$55; late entry fee after 09/10/09: \$75

SEND ENTRY TO: Race Chairman – PO Box 262, Solomons, MD 20688

CONTACT PERSON: Race Chairman, See SMSA Race Program Contacts page.

SKIPPER MEETING: There will be a Skippers Meeting at 1000 on Saturday 9/19/09 at the SMSA Clubhouse

STARTING AREA: Taking into account the types of boats, the number of competitors and weather conditions in the race area, the starting area is to be determined by the race committee.

STARTING LINE: The starting line will be between a yellow flag on the RC boat and the designated adjacent race mark.

FINISH LINE: The finish line will be between a yellow flag on the RC boat and the designated adjacent race mark.

COURSE: Taking into account the types of boats, the number of competitors and weather conditions in the race area, the race course is to be determined by the race committee, it is generally recommended that the race course be windward/leeward.

STARTING SIGNALS: As per RRS Rule 26

TIME LIMIT: Taking into account the types of boats, the number of competitors and weather conditions in the race area, the time limit is to be determined by the race committee.

AWARDS/#BOATS STARTING: 1st/3 2nd/5 3rd/7

PROTESTS: Protests shall be hailed to the Race Committee immediately following the race in which the infraction occurred. The protest shall then be lodged with the Race Committee at SMSA within one hour of the finish time of the last boat in class or at the time of Race Committee arrival, whichever is later. Protests will be heard ASAP.

PENALTIES: One-Turn Penalty (1 tack and 1 gybe in same direction), RRS Appendix D2.1 (b), will apply.

CLASS FLAGS: Determined by Race Committee to reflect classes present

CLASS PORTSMOUTH SPLITS: Taking into account the types of boats, the number of competitors and weather conditions in the race area, the class Portsmouth splits are to be determined by the race committee.

ADDITIONAL RACE INFORMATION: Boats are required to hail Sail Number and Class while close abeam of committee boat to be considered checked in. At that time, any sailing instruction amendments will be hailed.

OTHER INFORMATION: Awards will be presented at the SMSA clubhouse immediately following the race (pending any protest.) Results will be posted on the website at www.smsa.com. All participants are urged to attend and support our club.

SOUTHERN MARYLAND SAILING ASSOCIATION

FALL RACE SERIES

DATE: 9/27/09

ENTRY DUE: 1700, 9/26/09

FEE: \$35.00

SEND ENTRY TO: Race Chairman – PO Box 262, Solomons, MD 20688

CONTACT PERSON: Race Chairman, See SMSA Race Program Contacts page.

STARTING LINE: Rendezvous with the committee boat in the vicinity of Solomons Area Mark 'B' (# 3, FI G 2.5 sec). Be alert for Code Flag 'L'. If conditions warrant, the committee boat will proceed to a better starting area where a starting line will be established between the yellow flag on the committee boat and the adjacent race mark.

FINISH LINE: The finish line will be between the yellow flag on the committee boat and the designated adjacent mark.

COURSE: Olympic type course or designated Solomons Area Race Marks.

STARTING SIGNALS:	<u>CLASS</u>	<u>TIME</u>	<u>FLAG</u>	<u>SIGNAL (SOUND)</u>
		0945	"L"	Rendezvous
		1000	#5 Pennant Up	N Warning (gun/ sound)
		1001	Code Flag "P" Up	N Preparatory (gun/ sound)
		1004	"P" Down	(long horn)
	PHRF N	1005	#5 Down/#9 Pennant Up	N Start/A-D Warning (gun/ sound)
		1006	Code Flag "P" Up	A-D Preparatory (gun/ sound)
		1009	"P" Down	(long horn)
	PHRF A-D	1010	#9 Down	A-D Start (gun/ sound)

SUBSEQUENT RACE(S): Same sequence as first race with warning signal (#5 Pennant) approximately 10 minutes following the finish of the last boat in the previous race. Depending on the racing conditions, the Race Committee may elect to run a third race with the same sequence as the prior races.

TIME LIMIT: The time limit for each race shall be the length of the race divided by two expressed in hours. If the course length is more than 5 miles, the time limit shall be 2.5 hours. No races will be started after 1500.

SERIES AWARDS/# BOATS STARTING: 1st/3 2nd/5 3rd/7

PROTESTS: Protests shall be lodged with the Race Committee. Protests must be lodged within one hour of either the finishing time of the last boat of the race or the RC boat's docking time, whichever is later. Protests will be heard at a later time.

PENALTIES: The two turns penalty, RRS 44.2, will apply.

ADDITIONAL RACE INFORMATION: Boats are required to hail sail number while close abeam of committee boat to be considered checked in. At this time, any sailing instruction amendments will be handed out.

OTHER INFORMATION: Awards will be presented at a later date, time, and place to be announced. Results will be posted on the website at www.smsa.com and mailed to those who provide a self-addressed stamped envelope.

SOCIAL INFORMATION: Participants are invited to a mini rendezvous on Sunday at the SMSA Clubhouse. BYOS (bring your own snacks).

SOUTHERN MARYLAND SAILING ASSOCIATION

WOMEN'S FALL RACE SERIES

DATE: 10/04/09

ENTRY DUE: 1700 10/03/09

FEE: \$35.00

SEND ENTRY TO: Race Chairman – PO Box 262, Solomons, MD 20688

CONTACT PERSON: Race Chairman, See SMSA Race Program Contacts page.

ELIGIBILITY: The following special criteria shall apply for all racing boats:

1. Each Racing boat shall be under the command and steered by a **female skipper** from the preparatory signal of her class until she finishes the race.
2. Those boats with a male on board will receive a 5 second per mile rating penalty.

SKIPPER MEETING: Friday, October 02 at 1800 at SMSA Clubhouse.

STARTING LINE: Rendezvous with the committee boat in the vicinity of Solomons Area Mark 'B' (# 3, FI G 2.5 sec). Be alert for Code Flag 'L'. If conditions warrant, the committee boat will proceed to a better starting area where a starting line will be established between the yellow flag on the committee boat and the adjacent race mark.

FINISH LINE: The finish line will be between a yellow flag on the committee boat and the designated adjacent mark.

COURSE: Olympic type course or designated Solomons Area Race Marks.

STARTING SIGNALS:	CLASS	TIME	FLAG	SIGNAL (SOUND)
		0915	"L"	Rendezvous
		1000	#5 Pennant Up	N Warning (gun/ sound)
		1001	Code Flag "P" Up	N Preparatory (gun/ sound)
		1004	"P" Down	(long horn)
	PHRF N	1005	#5 Down/#9 Pennant Up	N Start/A-D Warning (gun/ sound)
		1006	Code Flag "P" Up	A-D Preparatory (gun/ sound)
		1009	"P" Down	(long horn)
	PHRF A-D	1010	#9 Down	A-D Start (gun/ sound)

SUBSEQUENT RACE(S): Same start sequence as first race with warning signal (#5 Pennant) approximately 10 minutes following the finish of the last boat in the previous race. No races will be started after 1500.

TIME LIMIT: The time limit for each race shall be 2.0 hrs. Boats not finishing within 45 minutes of the first boat to finish in their fleet shall be scored as "Did Not Finish".

SERIES AWARDS/# BOATS STARTING: 1st/3 2nd/5 3rd/7

PROTESTS: Protests shall be lodged with the Race Committee. Protests must be lodged within one hour of either the finishing time of the last boat of the race or the RC boat's docking time, whichever is later. Protests will be heard at a later time.

PENALTIES: The 2-turns penalty, RRS 44.2, will apply.

ADDITIONAL RACE INFORMATION: Boats are required to hail sail number while close abeam of committee boat to be considered checked in. At this time, any sailing instruction amendments will be handed out. Racing boats are to declare to the Race Committee any male aboard. A boat not having a PHRF rating will be assigned a provisional rating for this event. Please contact the Race Chairman in advance of your intent to race, to allow for adequate time for provisional rating assignment. In the case where a class does not race, the same starting sequence will be followed, as if the class were racing.

SEE ADDITIONAL INFORMATION ON NEXT PAGE-

WOMEN'S FALL RACE SERIES (cont'd)

OTHER INFORMATION: Although one man is allowed on board, the intention of this race is to encourage women's sailing and should be promoted as such. Results will be posted on the website at www.smsa.com. Awards will be presented at a later date, time, and place to be announced.

SOCIAL INFORMATION: A mini-rendezvous will be held at the clubhouse after the racing where provisional results will be announced. BYOS (bring your own snacks).

SOUTHERN MARYLAND SAILING ASSOCIATION

33rd ANNUAL HOOPER/POINT-NO-POINT RACE

DATE: 10/17/09

CBYRA SANCTIONED

REGION: 3SE

ENTRY DUE: 1700, 10/16/09

FEE: \$35.00

SEND ENTRY TO: Race Chairman – PO Box 262, Solomons, MD 20688

CONTACT PERSON: Race Chairman, See SMSA Race Program Contacts page.

STARTING LINE: Between the yellow flag on the committee boat and the race buoy in the vicinity of Solomons Area Mark 'B' (# 3, FI G 2.5 sec).

COURSE: Round Hooper Island Light and Point-No-Point Light to **starboard**, and to the finish line. If code flag "R" (red with yellow cross) is displayed on the committee boat, the course is to be sailed in **reverse order and side**. Solomons Area Mark 'C' ("1PR", FI G 4 sec) is to be passed on channel side at all times. The official distance is 29.4 nautical miles.

FINISH LINE: *On the channel side* of Solomons Area Mark 'B', between it and a yellow flag on the committee boat. If Race Committee is on station, boats should finish in accordance with SMSA General Sailing Instructions Section 15. If a Race Committee is **NOT** on station, boats are required to take their own finishing times in accordance with these Special Instructions. Finishing time should be taken when Solomons Area Mark 'B' bears 210° magnetic to *port* and is within two overall boat lengths. Each boat will remain in the vicinity of the finish line up to 20 minutes to record the finish time of the next boat. Start and finish times taken from the yacht's **official watch** must be reported to the Race Chairman by 1700, 10/19/09.

STARTING SIGNALS:	<u>CLASS</u>	<u>TIME</u>	<u>FLAG</u>	<u>SIGNAL (SOUND)</u>
		1000	#5 Pennant Up	N Warning (gun/ sound)
		1001	Code Flag "P" Up	N Preparatory (gun/ sound)
		1004	"P" Down	(long horn)
	PHRF N	1005	#5 Down/#9 Pennant Up	N Start/A-D Warning (gun/ sound)
		1006	Code Flag "P" Up	A-D Preparatory (gun/ sound)
		1009	"P" Down	(long horn)
	PHRF A-D	1010	#9 Down	A-D Start (gun/ sound)

TIME LIMIT: None

AWARDS/# BOATS STARTING: 1st/3 2nd/5 3rd/7

PROTESTS: Protests shall be lodged with the Race Committee or mailed to the SMSA Race Chairman. Protests must be lodged by 1600, 10/19/09. Protests will be heard at a later time.

ADDITIONAL RACE INFORMATION: Boats are required to hail sail number while close abeam of committee boat to be considered checked in. At this time, any sailing instruction amendments will be handed out.

OTHER INFORMATION: Awards will be presented at a later date, time, and place to be announced. Results will be posted on the website at www.smsa.com and mailed to those who provide a self-addressed stamped envelope.

SOUTHERN MARYLAND SAILING ASSOCIATION

38th ANNUAL FALL INVITATIONAL RACE

DATE: 10/24/09

CBYRA SANCTIONED

REGION: 3SE

ENTRY DUE: 1700, 10/23/09

FEE: \$35.00

SEND ENTRY TO: Race Chairman – PO Box 262, Solomons, MD 20688

CONTACT PERSON: Race Chairman, See SMSA Race Program Contacts page.

STARTING LINE: Rendezvous with the committee boat in the vicinity of Solomons Area Mark 'B' (# 3, FI G 2.5 sec). Be alert for Code Flag 'L'. If conditions warrant, the committee boat will proceed to a better starting area where a starting line will be established between the yellow flag on the committee boat and the adjacent race mark.

FINISH LINE: The finish line will be located between the yellow flag on the committee boat and the designated adjacent mark.

COURSE: Olympic type course or designated Solomons Area Race Marks.

STARTING SIGNALS:	CLASS	TIME	FLAG	SIGNAL (SOUND)
		1115	"L"	Rendezvous
		1200	#5 Pennant Up	N Warning (gun/ sound)
		1201	Code Flag "P" Up	N Preparatory (gun/ sound)
		1204	"P" Down	(long horn)
	PHRF N	1205	#5 Down/#9 Pennant Up	N Start/A-D Warning (gun/ sound)
		1206	Code Flag "P" Up	A-D Preparatory (gun/ sound)
		1209	"P" Down	(long horn)
	PHRF A-D	1210	#9 Down	A-D Start (gun/ sound)

SUBSEQUENT RACE(S): Depending on the racing conditions, the Race Committee may elect to run multiple races. Same start sequence as first race with the warning signal (#5 Pennant) approximately 10 minutes following the finish of the last boat in the previous race.

TIME LIMIT: The time limit for each race shall be the length of the race divided by two expressed in hours. If the course length is more than 5 miles, the time limit shall be 2.5 hours. No race will be started after 1500.

SCORING: If multiple races are run, the event shall be scored as a series, using the low point method.

AWARDS/# BOATS STARTING: 1st/3 2nd/5 3rd/7

PROTESTS: Protests shall be lodged with the Race Committee. Protests must be lodged within one hour of either the finishing time of the last boat of the race or the RC boat's docking time, whichever is later. Protests will be heard at a later time.

ADDITIONAL RACE INFORMATION: Boats are required to hail sail number while close abeam of committee boat to be considered checked in. At this time, any sailing instruction amendments will be handed out.

OTHER INFORMATION: Awards will be presented at a later date, time and place to be announced. Results will be posted on the website at www.smsa.com and mailed to those who provide a self-addressed stamped envelope. Preliminary results will be announced at the Chili Cook-off/Oyster Scald to be held at the SMSA clubhouse immediately after the race(s).

SOUTHERN MARYLAND SAILING ASSOCIATION

FROSTBITE RACES

2009 <u>SPRING SERIES</u>	2009 <u>FALL SERIES</u>	2010 <u>SPRING SERIES</u>	<u>ENTRY DUE</u>	<u>SERIES FEE</u>
03/01/09	11/01/09	03/07/10	2009 Spring 02/29/09 – 1700	\$100.00
03/08/09	11/08/09	03/14/10	2009 Fall 10/30/09 -1700	\$100.00
03/15/09	11/15/09	03/21/10	2010 Spring 03/05/10 - 1700	\$100.00
03/22/09	11/22/09	03/28/10		
03/29/09	11/29/09			

SEND ENTRY TO: Race Chairman – PO Box 262, Solomons, MD 20688

CONTACT PERSON: Race Chairman, See SMSA Race Program Contacts page.

STARTING AREA: Adjacent to the Chesapeake Biological Lab (CBL) Pier. The Race Committee will set up the signals along the rock seawall waterfront northeast of the CBL Pier, taking care to clear area behind the starting line so as not to obscure visibility of the flags from the race course.

STARTING LINE: Between a yellow flag along the waterfront and Solomons Area Race Mark “Y” (#2). The Yellow flag shall be positioned such that the start line is essentially square to the first race mark which is river mark “K”.

FINISH LINE: If the wind is favorable, the finish line will be at Solomons Area Mark “Z”, between a yellow flag at the Zahniser’s “H” dock and a yellow painted piling across the creek at Calvert Marina. Otherwise, the finish line will be between the RC’s yellow flag along the Chesapeake Biological Laboratory (CBL) waterfront and Solomons Area Race Mark “Y” (#2).

COURSE: The first mark shall be river race mark “K”. Other marks shall be designated by the Race Committee depending on wind speed and direction using designated Patuxent River Race Marks. Mark “Y” can be used to finish the race if the course must be shortened from a Zahniser’s finish.

STARTING SIGNALS:	<u>CLASS</u>	<u>TIME</u>	<u>FLAG</u>	<u>SIGNAL (SOUND)</u>
		1300	#5 Pennant Up	Warning (horn)
		1301	Code Flag “P” Up	Preparatory (horn)
		1304	“P” Down	(long horn)
	PHRF N	1305	#5 Down	Start (horn)

NOTE: Horns, not gun/sounds, will used along the CBL waterfront.

TIME LIMIT: 2.0 hours. Any boat finishing 1 hour after the first boat in class will be scored DNF.

SERIES AWARDS/# BOATS STARTING: 1st/3 2nd/5 3rd/7 4th/12 5th/17

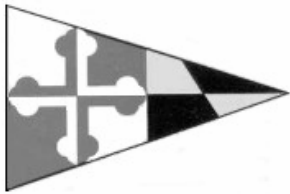
PROTESTS: Protests shall be lodged with the Race Committee within one hour of the finish time of the last boat. Protests will be heard ASAP.

PENALTIES: The two turns penalty, RRS 44.2, will apply.

ADDITIONAL RACE INFORMATION: Double headsails are not allowed. All participants **must** wear a PFD at all times. Spring Series races will use previous year’s PHRF rating unless a current rating has been assigned. If no valid certificate was held for the previous year, ratings for the races will be assigned based on SMSA General Sailing Instructions. The RC will use VHF Channel 72 to make announcements.

OTHER INFORMATION: Awards will be presented at a later date, time, and place to be announced. Results will be posted on the website at www.smsa.com.

SOCIAL INFORMATION: Provisional race results will be announced at the SMSA clubhouse after the race. All participants are urged to attend.



Season Race Entry Form (Non-Members)

SOUTHERN MARYLAND SAILING ASSOCIATION

(Print Legibly)

Class: _____
 Event Title: _____
 Entry Fee: \$500 Season or \$35 per
 Sanctioned Event #: _____

Sail #	Name of Yacht	Competitor's Name	CBYRA Membership #						Affiliate Yacht Club			Club Code #							

Competitor's Name: _____

Address: _____
 (Number and Street) (City) (State) (Zip Code)

E-Mail: _____

Telephone Numbers: Home (_____) _____ Office (_____) _____

Handicap Classes
 Class Rating _____
 Make & Model _____
 Hull Color _____
 Score in Region _____

This yacht conforms in every way to her Class Rules and Measurements. Handicap rating (if applicable) is on file with Class Representative or Host Club, and is attached hereto.

Yes _____ No _____

One Design Classes
 Hull Color _____
 Crew _____

I agree to abide by the regulations and sailing instructions for this event. In consideration of being permitted to enter this event, being knowledgeable of the risks of competitive sailing and knowing that it is my sole responsibility to decide whether to enter or continue any race, I voluntarily assume the risk of participation in this event and release the Host Club, **the Southern Maryland Sailing Association, Inc.**, and the people conducting the event from all liability in connection with any injury or damage that may occur.

Signature of Competitor _____ Date _____

NOTE: Membership in CBYRA, Class Association, and an affiliate Yacht Club are required PRIOR to earning any points toward CBYRA High Point Trophies.

(Failure to complete all pertinent blanks may cause rejection of entry).

This page intentionally left blank

NOTES



PROTEST FORM

also for requests for redress and reopening

Date and time received:
Received by:
Number

Fill in and check as appropriate

1. EVENT Organizing authority Date Race no.

2. TYPE OF HEARING

- Protest by boat against boat
- Protest by race committee against boat
- Protest by protest committee against boat
- Request for redress by boat or race committee
- Consideration of redress by protest committee
- Request by boat or race committee to reopen hearing
- Consideration of reopening by protest committee

3. BOAT PROTESTING, OR REQUESTING REDRESS OR REOPENING

Class Sail no. Boat's name
Represented by Address Tel.

4. BOAT(S) PROTESTED OR BEING CONSIDERED FOR REDRESS

Class Sail no. Boat's name

5. INCIDENT

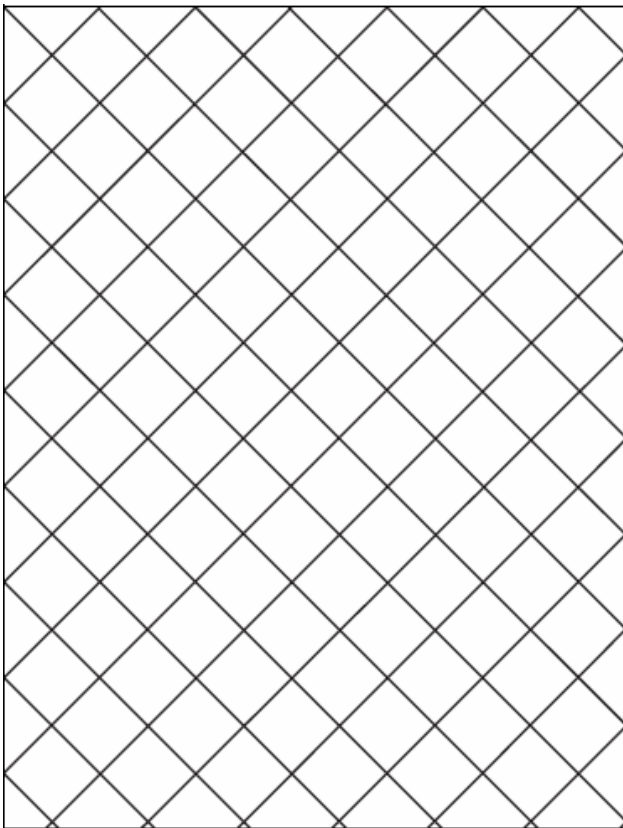
Time and place of incident
Rules alleged to have been broken Witnesses

6. INFORMING PROTESTEE How did you inform the protestee of your intention to protest?

- By hailing Word(s) used
- By displaying a red flag When?
- By informing her in some other way Give details:

7. DESCRIPTION OF INCIDENT (use another sheet if necessary)

Diagram: one square = hull length; show positions of boats, wind and current directions, marks.



.....
.....
.....
.....
.....
.....
.....
.....
.....
.....
.....

.....

.....

.....

.....

.....

.....

.....

.....

.....

.....

.....

.....

.....

.....

.....

.....

THIS SIDE FOR PROTEST COMMITTEE USE
Fill in and check as appropriate

Number
Heard together with numbers

Withdrawal requested ; signedWithdrawal permitted

Protest time limit

Protest, or request for redress or reopening, is within time limit Time limit extended

Protestor, or party requesting redress or reopening, represented by

Other party, or boat being considered for redress, represented by

Names of witnesses

Interpreters

Objection about interested party

Written protest or request identifies incident

'Protest' hailed at first reasonable opportunity

No hail needed, protestee informed at first reasonable opportunity

Red flag conspicuously displayed at first reasonable opportunity

Red flag seen by race committee at finish

Protest or request valid, hearing will continue

Protest or request invalid, hearing is closed

Remarks

.....
.....
.....
.....
.....

FACTS FOUND

.....
.....
.....
.....
.....
.....
.....
.....
.....
.....

Diagram of boat is endorsed by committee

Committee's diagram is attached

CONCLUSIONS AND RULES THAT APPLY

.....
.....

DECISION

Protest is dismissed Boat(s) is (are) disqualified ;
penalized as follows :

Redress is not given ; given as follows :

Request to reopen a hearing is denied ; granted

Protest committee chairman and other members

Chairman's signature Date and time

RACE COMMITTEE INSTRUCTIONS

Three Days In Advance:

Confirm all RC personnel (minimum 4) – make sure to include someone trained to drive
Begin tracking the weather predictions
Review the RC Equipment section
Review the RC Boat section
Review Running the Race section

Reread pertinent sections of the following:

- SMSA General Race Instructions
- Special SMSA Race Instructions for your event
- The Racing Rules of Sailing - Part 3 – Conduct of a Race
- If CBYRA event: Greenbook and CBYRA Yearbook

Gather Equipment:

- Hand Calculator and Laptop PC (if available)
- Hand-held GPS (not required, but good back-up to boat's GPS)
- Backup Supplies – pencils/scratch paper

Contact the Race Chairman by telephone with any questions. See Race Chairman Contact Sheet. **Fill out the RC Boat usage log before leaving the boat.**

Day of the Race:

For Wednesday Night Races, arrive at the boat by 1715, start the boat at the dock, allow it to warm up, and push off by no later than 1730.

For Weekend Race Events, arrive at the boat 30 minutes before leaving the dock to allow for setup, starting, and warm up. Arrive at the boat at least 2 hours before the event's first start and leave dock 90 minutes before first gun/ sound (45 minutes before published rendezvous time.)

Check the weather report for the day. Bring a weather tracking device if available.

Follow the RC Boat section.

While the RC boat is warming up, follow the RC Equipment section and prepare the Flags as described in the Flags/Signals section.

RC Boat:

Located on "G" Dock, Zahniser's Marina, Solomons, **Combination is 0000**. Keys to engine are in cabin on a hook next to the hatch. Please leave them there.

This boat runs on DIESEL fuel and should always have sufficient fuel for the event (Race Committee Boat Captain responsibility). The Engine cooling raw water intake is always open. If you have any mechanical problems, call Race Committee Boat Captain or Race Chairman or Vice Commodore; see the Contact Sheet for phone numbers. Zahniser's Boatyard performs maintenance on the boat.

Set the battery to "ALL." The battery switch is located inside locker of aft steering station. Let the engine warm up for a few minutes before leaving or the engine will die when you put the boat into gear. Walking the boat out of the slip is highly recommended.

Please remember to turn the battery to "OFF" when leaving the boat!!
Inform the RC Boat Captain or the Race Chairman, See the Contacts Page, of any discrepancies on the RC Boat. **Fill out the RC Boat usage log before leaving the boat.**

RC Equipment:

Check the RC Boat for sound operations and equipment. Flags and course markers are in a bag in the cabin. If available, the gun/sound is in the cabin in a black padded case. Race Circular, Horns, shotgun shells (if available), electric inflation pump, and other race items are in a box on the starboard side.

Flags & Signals:

If to be used for PRO or Weekend Race inflate the Large Yellow race marks with the electric inflation pump provided.

Use the small orange spherical fenders for the Wednesday start pin.

Tie anchors to the race marks.

Hoist "RC" & Yellow flag on the center halyard.

Ready the Race Management Flags on halyards or poles

Code Flag "L" (come within hail/follow me)

Raise when moving away from designated areas. Lower once anchored.

Code Flag "AP" (postponement, red & white pennant)

Code Flag "X" (individual recall, white & blue cross)

Ready the Class Start Signals on halyards as required by the Event's Sailing Instructions. Use outboard halyards to improve visibility.

Code flag "P" (Prep signal for all classes, Blue w/ white square)

#5 pennant (Non-Spin/PHRF N start signal), #4 pennant (Corinthian Class)

#9 pennant (PHRF A-D start signal)

Green Flag (Wednesday Night Fleet start signal)

White Flag (Wednesday Night Fleet start signal)

Set the Start Line:

Note: RC boat should always be on the proper hand side of the starting line based upon the direction of the wind and the first mark. Make sure "Yellow" starting line flag is set.

Don't rush...if you run into problems, raise the postpone signal instead of the first start pennant until you are confident you are ready. Use 2 sounds for postponement along with "AP" (red/white stripe pennant). Set the pin end of the start line, anchor the boat, set the course, then when ready, drop the postponement pennant with one long horn and begin the start sequence 1 minute later.

Weekend Events

Proceed to the rendezvous Solomons Area Mark "B"

Check wind direction and strength. Select probable course and committee boat location.

Set up in the vicinity of "B" if a good course results. **Do not use "B" as the pin.**

Use a yellow inflatable drop mark as the pin. If relocation is needed, hoist "L" and proceed to better starting area.

If a course change is needed, proceed to better starting area:

- Fly code flag “L” - (follow me) if moving any distance from “B”
- Set starting mark, if required.
- If the first leg is going to be a beat, set committee boat anchor well to windward (approx 75 yards) of a line 90° (square) to the wind direction. The line should be 90° to the average wind direction, NOT 90° to the course. Continue to adjust the anchor scope to fine tune the angle until the first warning signal, or after a postponement signal. Use of a hand-bearing compass will aid your efforts.
- If the first leg does not require tacking to get to the first mark, set the starting line 90° to the direction to the first mark.

Wednesday Race Series

Attempt to have the RC boat anchored no later than 1810 to give boats time to check in. Set drop mark “X” using the Lat and Long positions as noted on the Solomons Area Race Mark table at the end of this circular.

Use the Bearings (magnetic) as listed in the General Sailing Instructions to the other marks to verify your location.

Use of large inflatable drop marks is strongly encouraged.

Anchor committee boat so starting line is square to FIRST MARK OF THE COURSE (either first Race mark or Sandy Point if racing to the bridge).

Boat Check-in:

Record the BOAT NAME, SAIL #, PHRF #, CLASS

Classes are NonSpin, White, and Green for Wednesday Night Races and NonSpin and Spinnaker for all others.

All boats will declare their class intentions and will display the proper class pennant.

Set the Course:

Weekend Events

If wind is west or southwest, consider dropping a large inflatable drop mark for “W” approximately 1.5 miles directly to windward of desired starting area on the way out to the rendezvous spot.

For days with multiple races scheduled, aim for two, two-hour races or to have more than two, set shorter courses... windward/leeward if possible. Plan to get your races in before too late in the afternoon, so update your weather information when possible.

Give NS class a shorter course whenever possible, so all competitors finish in close proximity. This is especially helpful on the first race of a multiple race day.

Wednesday Race Series

Try to choose a course that will provide a beat during at least one leg of the race, and has an appropriate length for the evening’s conditions.

Either finish the race at “X” (drop mark adjacent to the RC boat) or “Z” (Zahniser’s “H” dock) depending on wind conditions. A race can be shortened at any turning mark listed on the course or by using designated shortening mark specified in Wednesday Night SIs in the Race Circular (example Mark “Y”)

Once the course is determined, post it as soon as practical, usually when committee boat is anchored.

The course letters will work best if located on cabin top under horizontal “boom”. Use clips to hold course letters together. Attach the letters to the boat to read left to right on the side of the RC boat away from the starting line. Red letters are rounded to port, green to starboard.

Start Sequence:

Recommendation: Drop postponement on the 4's or 9's of the clock to start sequence on a 5 minute interval for easier tracking – (ex. Drop “AP” at 1834 and start sequence at 1835 or drop “AP” at 1839 and start sequence at 1840)

Monitor the angle of the starting line. Postpone using the “AP” and reset if the angle becomes poor. Don't hesitate to consult with someone “on the water” if angle appears incorrect.

Begin the starting signal sequence, following the signal procedure in the Event Sailing Instructions.

Record the actual time of the start for each class on the same paper used for the Boat Check-in.

- **Over Early - Individual Recall**

For boats that are over early, as soon as possible set the individual recall flag, code flag “X”, white with blue cross, (with a sound signal, usually a horn held for ~3 seconds) and hail the sail number. When the boat(s) come back across start line, call sail # and “clear”. If boats do not re-start, lower flag at 4 minutes after that start.

- **General Recall**

Use the Code flag “first substitute” (blue & yellow pennant) and 2 gun/ sounds within 15 seconds of start. The recalled class will start *after* all other classes have started using the last start flag and gun/ sound as their 5 minute warning signal.

During the Race:

After all starts; tally all classes on the race forms, record course and winds with speed and direction.

Record course distance from the table in the race circular.

Record all distances to hundredths of a mile.

Enter individual boat corrections for distance.

Watch for changes in the wind and weather and monitor the progress of the race.

Shorten course if you have given a long course, the wind has lightened, and the race is still good.

DO NOT SHORTEN if the wind dies completely and no boats have finished. Signal “N”, with 3 gun/ sounds, (All races abandoned, further signals to be in the starting area). If the wind dies out completely, then prepare for a good race in the new wind, when it arrives.

Signal “N” over “H” to abandon and note that further signals will be made ashore. This tells the fleet to go back to the harbor. This is used when significant weather changes may occur and waiting for changes on shore is safer or better than waiting on the water for wind to fill in.

- **Shorten Course**

Use Code flag “S” (white w/ blue square) and 2 gun/ sounds before first boat before reaches shortened finish line (~100 yards from finish). Also fly class flags of class to be shortened, if required. (i.e. Fly #5 for shortening of non-spin fleet only while allowing spin class to complete original course.) Recalculate the course distance and individual boat corrections.

- **Change of Course**

Use Code flag “C” and multiple short horn blasts to draw attention as boats pass mark. Display new compass bearing on chalk/white board. This should be done at the turning mark *prior* to the relocated, ‘new’ mark. Recalculate the course distance and individual boat corrections.

Set the Finish Line:

Reposition RC Boat at finishing mark, if required. The finish line is usually shorter than the starting line, but don’t make extra work for yourself if the wind holds. Attempt to position finish line 90° to wind direction for an upwind or downwind finish, or 90° from last mark if a reach leg finish (it is recommended to have an upwind or downwind finish when running windward/leeward type courses.)

For the first race on multiple race days it is recommended to use the same mark for starting and finishing, facilitating quicker starting of the second race.

The finish line will be between a yellow flag on the RC boat and a designated *adjacent mark*, or as designated in the Special Sailing Instructions.

Note: the finish *mark* does not have a color. The finish line is, as stated above, between the RC boat and the designated *adjacent mark*. And, as per the RRS definitions, “A boat *finishes* when any part of her hull, or crew or equipment in normal position, crosses the finishing line in the direction of the course from the last *mark*...”

Finish:

SPOTTER - Calls sail numbers and class as the boats approach the finish line.

SIGHTER - Calls sail numbers and calls boat over when ANY part of a boat crosses the finish line when in a normal sailing position.

TIMER - Calls time out when a boat is called “over”

RECORDER - Records finish times for each boat.

SOUNDER - Signals with a gun/ sound for the first in class “over” and sound (horn) for rest of that class. This can be the same person as the sighter.

PROTEST RECORDER - Records finishers flying a protest flag and/or any penalty flags (code flag “I”) and records any intentions to protest delivered orally by competitors.

On Return to Dock:

Return RC Boat to its slip.

Please remember to turn the battery to “OFF” when leaving the boat!!

IF THE ONBOARD TOILET FACILITIES WERE USED, IT MUST BE EMPTIED BEFORE LOCKING UP THE BOAT!

Fill out the RC Boat usage log before leaving the boat.

Inform the RC Boat Captain or the Race Chairman of any discrepancies or supply shortages on the RC Boat. Include this list when submitting the race results. See the Contacts Page.

Be available to accept written protest at location designated in Special Sailing Instructions.

Report any protests filed to the Race Chairman and/or Scorer IMMEDIATELY either via email or phone. See the Contacts Page.

Email results to and/or call the Race Chairman and/or Scorer to make arrangements to drop off results and any pending protest paperwork. See the Contacts Page.

On days with a scheduled full or mini-*rendezvous* at the SMSA Clubhouse, make every attempt to announce provisional results. Competitors will be happy to help compute them.

After Race:

Compute the results.

Example:

Length of course from race book.....5.15 n.m.

Handicap Allowance for boat: NOTE: Record all distances to hundredths of a mile. Use correction tables in RC Manual or do long hand when tables do not apply (hundredths not given).

PHRF 138 sec./mi. x 5.15 nm = 710.7 sec = 11 min, 51 sec.

Example:

Start time 18:35:00

Finish time 20:30:03

DO THE MATH:

Finish time 20 hours 30min. 03 sec.

-Start time -18 hours 35min. 00 sec.

Elapsed time = 1 hour 55min. 03 sec.

Elapsed time 1 hour 55 min. 03 sec.

- Handicap allowance - 11 min. 51 sec.

Corrected time =1 hour 43 min. 12 sec.

THE LOWEST CORRECTED TIME GETS FIRST PLACE, etc.

Coordinate with Informal Coordinator or Race Chairman for awards.

It is very highly recommended to use a laptop PC to compute race results using the spreadsheets provided on the www.smsa.com Race Worksheet web page.

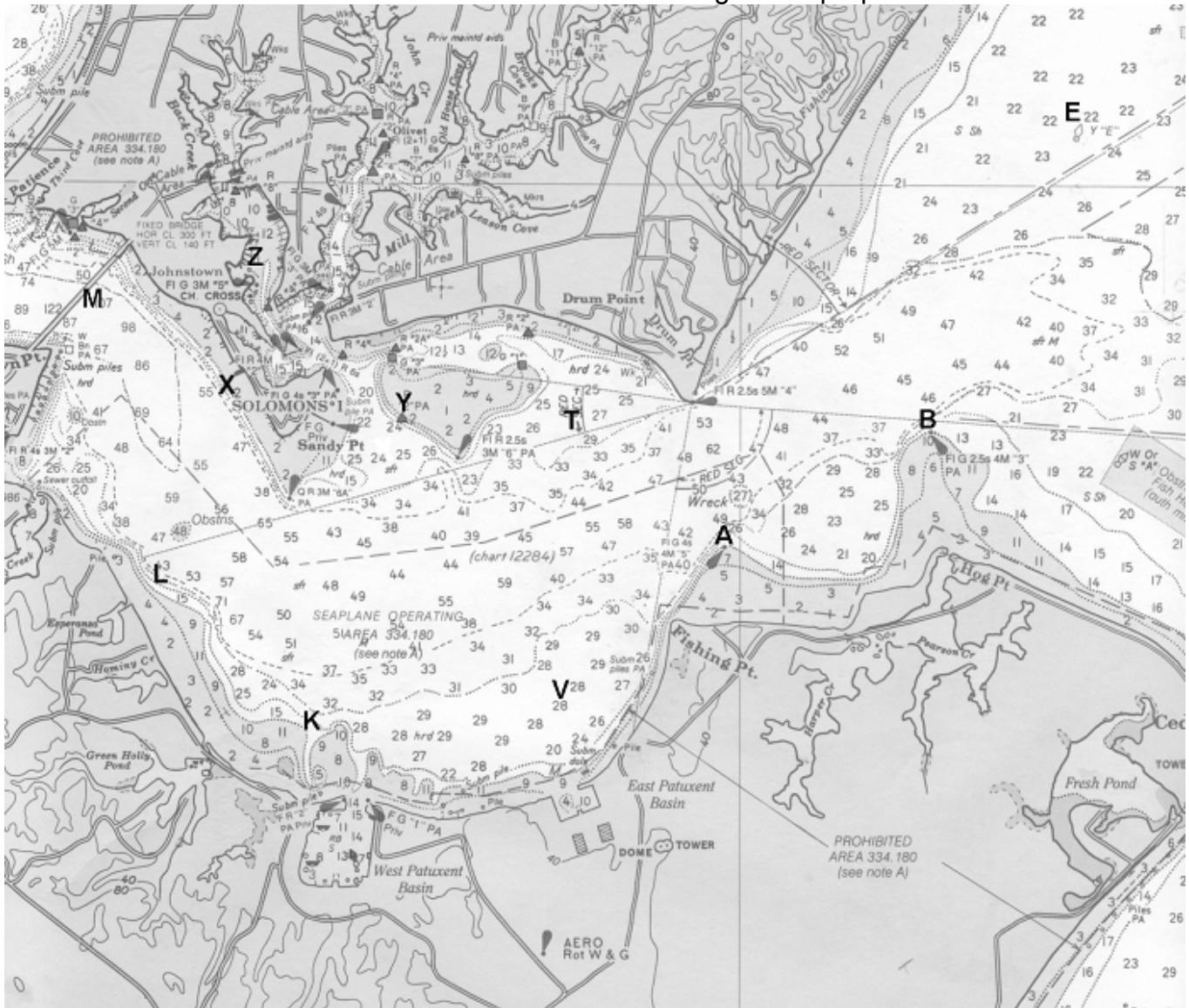
Email results to and/or call the Race Chairman and/or Scorer to make arrangements to drop off results and any pending protest paperwork. See the Contacts Page.

Thank You for Volunteering You and Your Crew – SMSA Members and Officers do appreciate your help!!

SOLOMONS AREA RACE MARKS

<u>Mark</u>	<u>Designation</u>	<u>Description</u>	<u>Latitude</u>	<u>Longitude</u>
A	"5"	PR # 5, FI G 4 sec	38 18.56'	76 25.09'
B	"3"	PR # 3, FI G 2.5 sec	38 19.04'	76 24.05'
E	"E"	SMSA "E" (Yellow)	38 20.11'	76 23.20'
K	West Basin	SMSA "K", West Basin buoy (yellow mark)	38 17.80'	76 27.11'
L		SMSA "L", (yellow mark)	38 18.55'	76 28.09'
M	T.Johnson Bridge	SMSA "M", Johnson Bridge North center span piling	38 19.53'	76 28.34'
T		SMSA "T", (yellow mark)	38 19.05'	76 26.05'
V	East Basin	SMSA "V", East Basin buoy (yellow mark)	38 18.01'	76 25.98'
X	Gazebo	SMSA "X" (yellow mark) across from Gazebo	38 19.26'	76 27.728'
Y	"2" PA	Red day marker (Rounding mark for finish at Z)	38 19.09'	76 26.73'
Z	Zahniser's Marina	Yellow piling across creek from Zahniser's "H Dock"		

This chart should not be used for navigational purposes.



CHESAPEAKE BAY RACE MARKS

Mark	Designation	Description	Latitude	Longitude
C	"1PR"	PR #1, FI G 4 sec Bell	38 18.14'	76 21.11'
E	"E"	SMSA "E" (Yellow)	38 20.11'	76 23.20'
G	"77"	FI G 4 sec Bell	38 21.20'	76 21.76'
H	"HI"	RW "HI" Morse Alpha Mo(A)	38 18.40'	76 18.41'
I	"76"	FI R 4 sec	38 21.23'	76 18.32'
J	"74"	FI R 2.5 sec	38 18.55'	76 17.03'

