

Members Mailing Address

Stamp  
here



Southern Maryland Sailing Association  
PO Box 262, Solomons, MD 20688

April 2009  
Vol. 39 No. 4



April			
Sat	4	Opening Day	9:30
Thurs	9	HS Sailing Potluck	
Sat	11	Cruisers Raft	5:00
Mon	13	Program Chair Meeting	6:30
Wed	15	First Wednesday Night Race	
Wed	15	Clew inputs due	
Sun	19	Varsity Fleet Regatta	
Fri	24	Small Boat Program Kickoff Meeting	6:30
Sat	25	Race: Sharps Island	
Sat	25	Cruise to Battle Creek	

May			
Sat	2	Cinco De Mayo Party	
Sat	2	RC Boat Work Session	10:00
Sat	2	Spring Invitational Race	
Thurs	7	First Small Boat Race	6:30
Sat	9	RC Boat Work Session	
Sat	9	Double Handed Race	
Sat	9	Cruisers Raft	
Mon	11	BOD Meeting	7:30
Fri	15	Clew Inputs Due	
Sat	16	Race-Frost Goode Series	
Sat	16-25	Memorial Day Cruise North Bay Cruise	
Sun	17	Varsity Fleet Race	
Sat	30	Women's Spring Race Series	
Sat	30	Luau Rendezvous	
Sun	31	Women's Spring Race Series	

*In this issue:  
Frostbites  
RC Help  
Clubhouse  
Upgrades  
Many other deeds  
to fill your  
needs!.....*

## SMSA Expecting a New Baby

By: Clarke McKinney

Yes, Mary Anne and I'll be grandparents soon. Allison and Brett are expecting a baby on April 3. But that's not the only baby that's going to be around Solomons. It's the new Race Committee Boat that is also due to arrive on April 3 that will be close to your hearts.

A Boat Search started before last fall, after the transmission failed on the ailing RC Boat. This boat served most of the SMSA programs for fourteen seasons. The boat had weaknesses that included lack of mobility and speed, and a propulsion system that was based on a discontinued bus engine that was marinized in someone's backyard. These traits prevented the boat from ever qualifying as a good candidate for use during any of the Screwpile regattas.

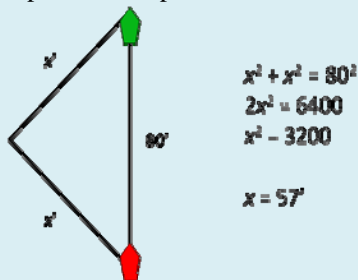
Parameters for a replacement boat were determined. The boat should be between 30'-35' to be comfortable in most sea states, yet still be maneuverable enough for a variety of operators. A large open work area for committees to signal races from is needed. There had to be a good balance between shaded and open cockpit area. The anchor system should be controlled at the helm station. A diesel engine should power the boat, a must for safety for a boat that is operated by various people. The engine should be a production model that comes set up for marine use. Also the freeboard shouldn't be very tall, so setting marks or assisting small boats can be accomplished with greater ease. Other details that were considered were storage, *(continued on page 2)*

## Race Committee Refresher

### Why A Square Starting Line Is So Important

By: Keith Jacobs

As you head out for your turns as race committee this year, take a moment to think about what you can do to ensure the races you set are as fair as possible. Over the years, the annual Race Management Training Sessions review the notion that you should set a square starting line so as not to bias one end over the other. Let's take a few minutes to understand why this is such an important aspect of our sport – but beware, some trigonometry and math lie ahead.



In a previous article, we took a look at setting starting lines long enough for the classes in given weather conditions. So, let's assume that we are going to set a line that is 450 feet long (which is not an unreasonable distance for twelve 30-foot boats in high winds and/or sea state conditions). Ideally, we will drop the anchor, hook the bottom, and settle in with the pin end of the line perpendicular to the first *(continued on page 6)*

*Do you have tall tale to share?*

Send your stories to [clew@smsa.com](mailto:clew@smsa.com)

## Race Management Series

We would like to extend a big thanks to Keith Jacobs for presenting to us four separate topics helping with our race management skills. On four separate occasions Keith covered topics ranging from setting up starting lines, selecting appropriate courses, handling starting procedures and all the interesting and juicy discussions that we rarely get to see, but love to argue about! The seminars were attended by dozens of individuals who were eager participants.

### CPR and First Aid

Last month Kristin Quinn, SMSA member and regular crew on "Whiskers" came to the club to teach an all day CPR and First aid course to nine eager students. The course was very informative, and interactive. There was a great deal of hands on practice with the dummies...and mannequin's too☺

Kristen's course is endorsed by the American Safety and Health Institute. If you or anyone you know is interested in attending such a course in the future, or have a specific idea for a course that you would like to see held please let us know.

Simply send an email to [clew@smsa.com](mailto:clew@smsa.com) and we will make sure your ideas are heard

### Small Boat Kick Off Meeting

Friday, April 24, 2009

6:30 pm

At the clubhouse

Come on out and meet up with old friends and make some new ones.

Sign up for race committee early before the best weeks are taken.

For more information and to volunteer email: [smallboat@smsa.com](mailto:smallboat@smsa.com)

(new baby from pg 1) a working head, and setting up the system used to conduct races.

After many trips around the mid-Bay, along both shores and beyond (as far as NJ), it seemed as though a “Bay Built” deadrise style boat would fit the SMSA needs the best. Sportfish and Lobster boat styles were reviewed during the search as well. Knowing that a fiberglass hull was the only way to go, the research revealed that several brands utilized hulls that were laid up by Glen Manning of the eastern shore. He had molded a 32 foot hull that several boat builders finished off. These included brands such as Jones, Kinnamon, Manning, Markley, and McLaughlin. Each of these boat builders has unique techniques that separated the boats from each other in quality and price. It became apparent that the Kinnamon 32 was the boat that would fit SMSA’s needs and budget.

During the search, ten different 32’ Manning hulls were looked at ranging in price from \$30K to \$108K. Of the six Kinnamon 32’s that were inspected, three of them were surveyed for SMSA by Mike Previti. After surveys were complete the negotiated prices ranged from \$30K for a 1997, \$42K for a 2001, and \$45K for a 1998. Each boat had areas that needed improvement or repairs before going into service at SMSA. After the BOD and Officers reviewed the search results, it was the 2001 Kinnamon 32’ that was agreed upon to purchase.

The features of the 2001 model:

- 225HP John Deere 6cyl. Diesel with 1450 hours
- Large 75 gal. SS fuel tank
- Furuno 1850 GPS
- Furuno Depth/Fish Finder
- Larger Kinnamon cabin layout
- Full canopy
- Above average topside finish and condition
- Driest, strongest deck, cockpit sole, and cabin sole
- EZ Puller windlass with ground tackle

It was determined that the boat would need improvements before going into service. The canopy would need to be shortened and reinforced. A head and holding tank needed to be installed. These modifications are in the works and will determine if the new RC Boat will ready for the April 3 schedule or at worst by April 15, in time for the first Wednesday Night race.

Upon arrival of the SMSA RC Boat, it will be mandatory that all operators of the boat will need to be checked out, initially by myself or John McKinney. It is expected that the list of qualified operators will grow quickly. It is a requirement to have an “approved operator” onboard whenever the boat leaves the slip. After the boat arrives in Solomons, make an arrangement to go for a ride.

The boat, like any, needs to have some maintenance performed to make sure that it will last (*Continued next page*)



Move over Rock Crusher...Here comes “Strawberry”



We would like to extend a special “Thank You” this month to our sponsors:



Bozick  
Distributors



Elizabeth "Betsy" Dodge



Zahniser's  
Yachting Center

many years. The primary goal for maintenance this season will to lift and re-bed all of the deck hardware and equipment. Since the decks are glassed over plywood, it is paramount that a few re-bedding sessions happen soon. Currently, the first session is scheduled for May 2 at 10:00 at SMSA. Thinking that many hands make for small work, a group of 8-10 workers would be a comfortable size force. The membership will have a chance to see the boat, its improvements and possibly get checked out for operating later in the day at the Cinco de Mayo celebration.

As the SMSA programs that utilize this RC Boat continue to develop, please remember to thank the BOD, the officers, yourself, and John McKinney for the time and support that has gone into this project. With your help, this SMSA asset will last for many years. Thanks for allowing me the rewarding, enlightening, and fun time taking part in the boat search.

Clarke

**Slips available for long- or short-term rentals:**

Wet slips are still available for rent by the night, by the month, or by the season. Please let your facilities chairs know if you are interested in space. Long term rentals are available at \$6/foot/month for SMSA members. If you're interested, please contact us for slip availability.

For overnight or weekend rentals, SMSA members may house their boats for \$1/foot/night. And, as a reminder, there is no charge to SMSA members for hourly dockage that doesn't meet the above criteria.



Don & Noah Fletcher enjoying the March 8<sup>th</sup> ---70 degree Frostbite race

**2009 Junior Program.**

The junior portion of the SMSA website was updated in mid-March and now includes new fee and schedule information. This year we will feature our popular Opti Summer Sailing Camp Program, instructed by SMSA's own Rebeckah Stanley. One of the changes this year is the age bracket, now 6 thru 16, so get those junior members and grandkids signed up.

In addition to the Opti program, we hope to acquire some JY-15s for the older sailors. Details on this portion of the program are still being ironed out and information will be relayed as it becomes available.

I would like to take a minute to thank J.R. Johnson, Jimmy Yurko, Guy Barbato & Shawn Stanley for all of their help with maintenance on various Junior program equipment this spring. Also, I'd like to thank Laura Comeau-Stanley for her help with updating the website and paperwork processing. If you have any questions about this year's program, send me an e-mail – [junior@smsa.com](mailto:junior@smsa.com)

-Sam September  
Junior Chair

**Contest:**

Nemonic, monimic, MNEMONIC! Whatever; Remember the old race course ditty for remembering where the marks were:

**B A Very Knowledgeable Mariner?** Can you think of a new one for the new race course marks?

Check out the race circular for the latest details on

**B A V K L M X Y T!** Get creative!

Sailor with the best Mnemonic wins a glass with your new Mnemonic Engraved on it!

Also, she or he who can say that 3 times fast!

Helen Cummings

## RACE Program

This update will be coming to you after our Opening Day, but for me, the days are still drizzly and cold as I finish up the final things to do. But, at least we are snow free. The photo on page seven is Jim Whited on Whiskers the day after the first Spring Frostbite race. Digging out 10 inches or more of snow after de-winterizing the boat was not that much fun - was it?

The Spring Frostbites are finished with final results posted on the web. As of this writing, there is a five-way tie for first. If this is how the season starts, it should be an exciting one!

All boat owners that have registered should have received a copy of the 2009 Racing Circular. Lots of thanks go to Max Munger, JR Johnson, Clarke McKinney, Keith Jacobs, and Donna Maneely for their inputs, reviews, and attention to detail. Extra copies are \$10 each. An official version is also available on the Race page of the web that includes the beautiful shot of Little Latitudes, 2008 SMSA High Point winner, on the cover!

I know I have badgered you to sign up for Race Committee duty this year. Hopefully, the openings shown here are already taken. Check the Race page on the web for other sign-up dates. I will try to send an email to the Race Committee as a reminder, but it may be hit or miss, so don't rely on me to remind you.

When you do Race Committee, there are a few changes, besides the new boat. There are now TWO flag bags. The green one contains all of the flags required to run a standard fixed distance race; it contains the start sequence flags, the R flag, the shorten course flag, and the change of course flags. You only need this bag when you do races such as Sharps Island, Little Choptank, Vice Commodore, Frost-Goode, and Smith Point. The other bag contains all of the flags for races using the Solomons Island area and Chesapeake Bay area Race marks; it contains all of the red and green letters. In this bag you will also find a "2" and a "3." These are used when you want to do a repeating race, such as a KXX race; now just do a KX2. Big thanks to Barb Whited for redoing and making these bags so nice and easy to use!

Another new item for the RC this year is our Eco-Blaster horns. These are refillable using a simple hand pump or tire pump or gas station air station. They can handle around 100 psi of pressure and are very loud. With the included hand pump, I can do about 100 pumps and get enough sounds for a start sequence. There are two onboard, so you can always have one with air in it to use while someone pumps up the other. I got two different styles of these *horns* to try out; let me know which style you prefer. This saves us a lot of stocking of air canisters, money, and garbage when they are empty. Please don't toss them when they are empty - refill them for the next race!

Our new X mark by the Gazebo has been dropped in and the L mark has been moved to be at a nicer SW direction. Again, it is all of you who have helped to make this happen. Shawn Stanley, Jeff Moore, Robert Herbig, and many others contributed time, materials, and some brute strength to getting these marks out and in this year.

For those of you not able to attend Keith Jacobs Race Management Training seminars that were held during the past couple of months, they are available on the Race page of the web. Please check them out and review them. Remember, as noted in the 2009 Race Circular, there is a requirement that a Race Committee member have the proper training and experience before heading out on the water. (*Continued on page 7*)

(Starting line length from page 2) mark of the course. Failure to do so will have consequences.

In this scenario, if you wind up just 1° high or low, you will be 8 feet off the desired perpendicular; 5° equates to 40 feet; and, 10° is 80 feet. However, this is not the complete story. In order for a sailboat to cover those 80 feet, the Pythagorean Theorem tells us that it will actually have to sail nearly 120 feet! (For argument’s sake, let’s assume that we are dealing with 90° tacking angles.)

<b>Time Required to Sail 120'</b>					
<b>Knots</b>	<b>6</b>	<b>5</b>	<b>4</b>	<b>3</b>	<b>2</b>
<b>feet/second</b>	<b>10.0</b>	<b>8.4</b>	<b>6.8</b>	<b>5.1</b>	<b>3.4</b>
<b>Time Required (seconds)</b>	<b>12</b>	<b>14</b>	<b>17</b>	<b>24</b>	<b>35</b>

Now, let’s take this through one more step. Let’s translate the distance into something that means so much more to all of us – time. Via the adjacent table, consider just how long it will take to cover the distance. For a comparison, what speed do you typically see as you are coming off the start line for a Wednesday night? I don’t know about you, but I can think of quite a few instances where the boat on which I was racing missed a higher finish by less than 10 seconds.

So, as you are setting anchor on the committee boat and aligning yourself to the pin, take a moment and consider things from the racer’s perspective. Picture yourself getting pushed away from the favored end - where you want to start - and instead heading towards a coffin corner. What will be your thoughts about a PRO how sets a line that is less than square? Just as a PRO owes you a square starting line, always remember that you have an obligation to provide the same.

## **Wanted**

**Cruising Inputs,  
Articles, Updates**

**Reward:  
Fewer Lame Ads!**

Email your ideas to [clew@smsa.com](mailto:clew@smsa.com)



## **Frostbitten**

The frostbite races are now over, and the five race March series lived up to its name.

The first Frostbite race took place in powerful winds with an oncoming winter storm...ice forming on the decks as the racers finished, and numb, stinging hands were the standard throughout the fleet.

The second race brought us over 70 degree temperatures moderate breezes and a large fleet it was a day that really made you realize why we sail, and truly glad to get out on the water.

Each of the following races had it’s own flare...find a racer and a story to share.

Congratulations to Dan Schneider and the crew of American Flyer for their close series victory. With only one point separating first and second place, this series was one to watch closely.

Enjoy the pictures from the Frostbites throughout this month’s Clew.

### Race Committee Assignments

Here is the current April and May Race Committee assignments. I hope you have signed up and that all of the openings are filled by the time you receive this.

Month	Day	Week Day	Event	Race Committee
April	15	Wednesday	Wednesday #1	<b>RC NEEDED</b>
April	22	Wednesday	Wednesday #2	<b>RC NEEDED</b>
April	25	Saturday	Sharp's Island	<b>RC NEEDED</b>
April	29	Wednesday	Wednesday #3	<b>RC NEEDED</b>
May	2	Saturday	Spring Invitational	<b>RC NEEDED</b>
May	6	Wednesday	Wednesday #4	<b>Lickety Split</b>
May	9	Saturday	Double Handed Race	<b>RC NEEDED</b>
May	13	Wednesday	Wednesday #5	<b>RC NEEDED</b>
May	16	Saturday	Frost-Goode	<b>RC NEEDED</b>
May	20	Wednesday	Wednesday #6 PRO	<b>RC NEEDED</b>
May	27	Wednesday	Wednesday #7	<b>Elan</b>
May	30/31	Sat/Sun	Women's Spring Series	<b>RC NEEDED</b>

Don't forget to sign up for at least TWO Race Committee assignments this year. None of us can race unless we all pitch in! Check the web page and email me at [race@smsa.com](mailto:race@smsa.com) with your selections.



### **New Laser Racks to be constructed:**

Our efforts to make our facilities more user-friendly are continuing. Plans are being developed for a new concept of storing the many Lasers at our facility, with the general idea of storing them vertically against the North wall of the building. Our hope is that we will reduce the footprint of the Lasers, allowing more space for larger dinghys, while making it possible for each Laser owner to retrieve and store their Laser single-handed. We're designing the racks so that they'll be able to house other similar sized boats.

Construction will begin this month, and work party announcements will be provided via the weekly email sent to you by Membership. Please come join us as we build these racks, and improve our facilities!



Just can't wait for your next Clew? Are you feeling sailing withdrawal? Or do you just like to be first for things? If any of these match you, send an email to [clew@smsa.com](mailto:clew@smsa.com) type "early edition" in the subject line. You will be placed on the Clew "early edition" mailing list. You'll get the draft-document version emailed to you before it goes to the printer.

**Bartender Signups for April:**

The following members have agreed to be Bartenders for Friday Night Socials/Events at the Clubhouse:

Date:	Responsible Program	Volunteers
April 3	Race	Jeff Moore
April 10	Juniors	We Need YOU!
April 11	Cruise	Rich Freeman
April 17	Officers	We Need YOU!
April 24	Directors	We Need YOU!

We encourage all of our TAMs and members to volunteer your time as Bartenders. It's not that hard—Max has developed a handy checklist to guide you through the process—and it's a great way to meet/greet both old and new members.

The signups sheet is kept on the Bar. Please sign up and support your club's activities!

High School Sailing:

Parents and siblings are welcome to join the several pot luck dinner events held during the season. Useful information about the course of the program and logistics supporting interscholastic competition is always part of these events. They will be held on Wednesday, March 11 2009, and Thursday, April 9, 2009. A pot luck Spring Awards Dinner will be held at SMSA in Solomons on Sunday, May 17, 2009, following our last varsity regatta on that day.

Three weekly practice sessions, hosted by SMSA: The SMSA sessions will run from 3:00 pm to 6:30 pm., Wednesdays, Thursdays, and Fridays, from March 4, 2009 to May 15, 2008. Wednesday and Thursday sessions will be conducted at the SMSA site on Solomons Island. Most Friday practices will be conducted at St. Mary's College.



US Sailing  
Level 1 Instructor  
Course  
June 6,7,13,14  
Saint Mary's College of  
Maryland  
Sign up on the US  
Sailing Website

**Sailing Center Chesapeake**

The Southern Maryland Sailing Foundation, is making great strides in the process of opening the Sailing Center Chesapeake. The Sailing Center will host junior programs such as High School Sailing Teams, Regattas, junior and High School sailing camps. The Center will be housed at Millburn Creek Marina for the 2009 season.

All Shined Up and Nowhere to Go

Clubhouse cleanup day has come and gone...thanks to the myriad of volunteers who 'squeegeed' windows, raked leaves, scrubbed out the fridge and made all the nooks and crannies of the clubhouse truly spic and span...

The place looks great, and is ready for the season...

**Classifieds**

**For Sale by John Bailey** [410-326-3115] in Lusby area. Email [baileywickco@comcast.net](mailto:baileywickco@comcast.net) or call for appointment and driving directions. Photos are available by email.

- Spinnaker poles: 1) 17' by 4" with socket one end and slide pin the other. 2) 15' 6" by 3" with slide pin fitting each end. Could be made shorter. Offers?
- Teak door unit for a sailboat with frame. Offers?
- Magma grill with mounting bracket plus 2 replacement lids. Offers?
- Sailboat TV antenna. Offers?
- Man overboard poles. Free!

**For Sale by John Bailey** [410-326-3115] in Lusby area. Email [baileywickco@comcast.net](mailto:baileywickco@comcast.net) or call for appointment and driving directions. Photos can be sent by email on request.



**Laser One Design Sailboat:** This laser [hull # PFS 08887] is complete with all equipment. Equipment includes a new North racing sail [purchased 2004 for \$489 and used once], a used sail, mast, rudder, tiller with hiking extension, dagger board, fitted boat cover, gear bag [for sails, battens, dagger board, rudder, tiller, lines, batten set], and a deck plate with storage pocket. The rowing rig available is described below. Asking price for Laser without rowing rig is \$1,500. With rowing rig included price is \$1,700. The original trailer is included.



**Laser Sailboat Rowing Rig:** This rowing rig converts any Laser sailboat to a slick rowing boat for great exercise. Easily installed and removed. The moving seat and gorgeous sculling oars give excellent exercise when not sailing. This rig can be purchased as part of the Laser package above or purchased separately. Asking price for row rig only is \$300. It can be seen at the Bailey home in Lusby. Contact John Bailey 410-326-3115.

**Propane Tanks:** 10 pound USA style with OPD [2 ea], 10 pound Canadian style (used on Niagara 35) [3 ea]. Pick them up and they are free.

**Wind Surfer with two sails:** This 11' 5" foot long wind surfer has all the gear and two sails. It would be a good starter boat. Asking price \$200.

**Battery Cables:** Assorted battery cables for free. Save a bundle by not having to buying new.

**Commercial Sewing Machine:** Viking brand, \$50.

**For Sale by John Bailey** [410-326-3115] in Lusby area. Email [baileywickco@comcast.net](mailto:baileywickco@comcast.net)



### **My crew doesn't have a Clew!**

Did you enjoy your clew? Does your crew, or your neighbor have a clew? Pass your Clew along. Instead of dropping it into the recycling can, pass it on to someone who really needs to get a Clew!

Got a story to tell? Are you interested in placing an event or article in the Clew? After all this is your newsletter....email any inputs to [clew@smsa.com](mailto:clew@smsa.com) and your article or ideas could be included in the next issue! Articles submitted by the 15<sup>th</sup> of the month have priority for the following month.